

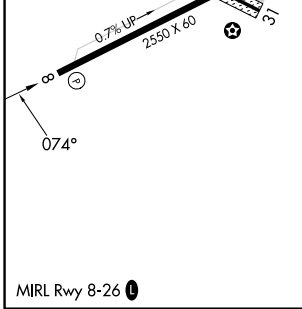
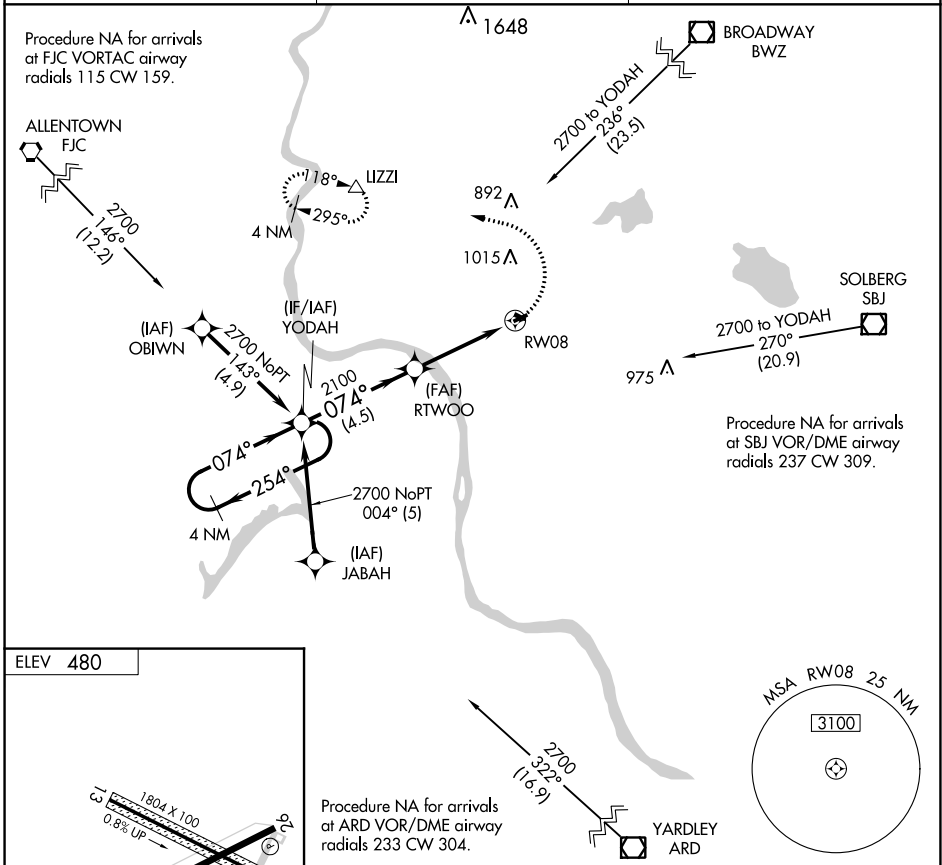
APP CRS	Rwy Idg	N/A
074°	TDZE	N/A
	Apt Elev	480

# RNAV (GPS)-A

ALEXANDRIA (N85)

<p><b>▽</b> DME/DME RNP-0.3 NA. Use Lehigh Valley Intl, Allentown, PA altimeter setting. Procedure NA at night. Helicopter visibility reduction below 1 SM NA.</p>	<p><b>MISSED APPROACH:</b> Climbing left turn to 3000 direct LIZZI and hold, continue climb-in-hold to 3000.</p>
--	--

<p>ALLENTOWN APP CON <b>119.65 124.45 351.8</b></p>	<p>UNICOM <b>122.975 (CTAF)</b></p>	<p><b>121.8 0</b></p>
---	---	-----------------------



<p>4 NM Holding Pattern YODAH</p> <p>VGSI and descent angles not coincident (VGSI Angle 4.00/TCH 30).</p>		<p>3000</p> <p>LIZZI</p>
<p>2700 ← 254°</p> <p>074° →</p> <p>074°</p>		<p>RTWOO</p> <p>RW08</p> <p>3.77° TCH 35</p>
<p>CATEGORY</p>	<p>A</p>	<p>B C D</p>
<p><b>C</b> CIRCLING</p>	<p>1240-1 760 (800-1)</p>	<p>NA</p>

NE-2, 26 DEC 2024 to 23 JAN 2025

NE-2, 26 DEC 2024 to 23 JAN 2025