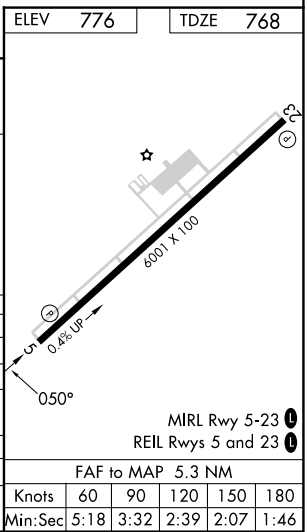
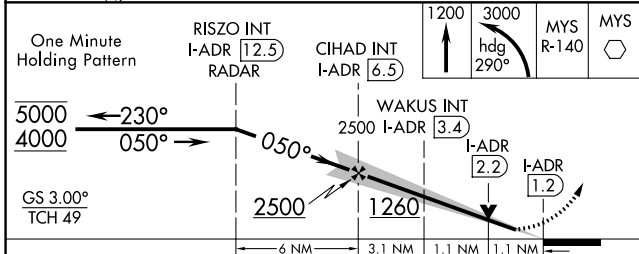
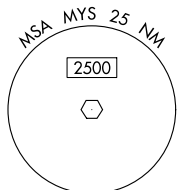
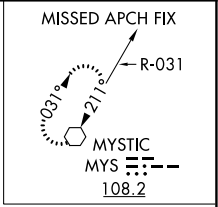
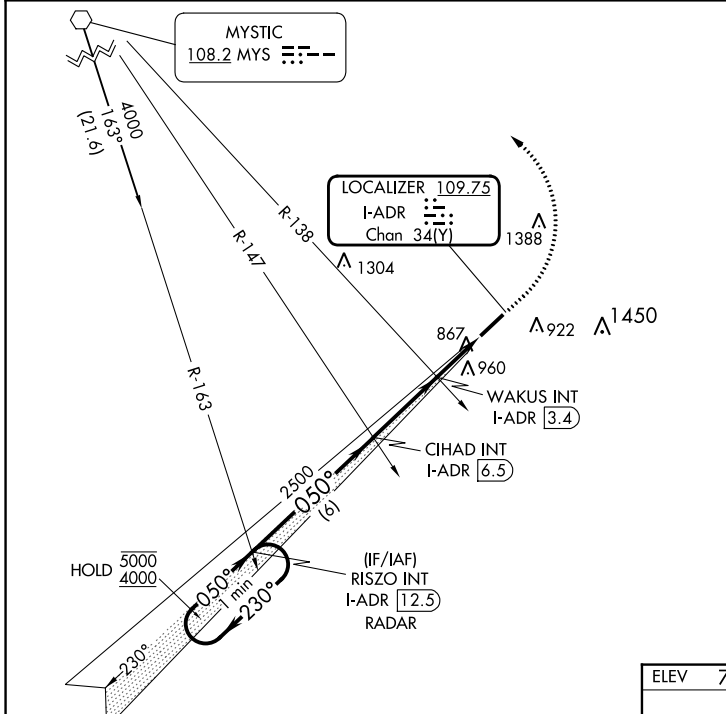


LOC/DME I-ADR <b>109.75</b> Chan <b>34(Y)</b>	APP CRS <b>050°</b>	Rwy Idg TDZE Apt Elev <b>6001</b> <b>768</b> <b>776</b>
---	------------------------	--

# ILS or LOC RWY 5

ADDINGTON FLD (EKK)

		MISSED APPROACH: Climb to 1200 then climbing left turn to 3000 on heading 290° and MYS R-140 to MYS VOR and hold.	
AWOS-3 <b>121.025</b>	LOUISVILLE APP CON <b>132.075 327.0</b>	CLNC DEL <b>119.45</b>	UNICOM <b>123.075 (CTAF)</b>



CATEGORY	A	B	C	D
S-ILS 5	968-3/4		200 (200-3/4)	
S-LOC 5	1260-1	492 (500-1)	1260-1 3/8	492 (500-1 3/8)
CIRCLING	1260-1	484 (500-1)	1420-1 3/4 644 (700-1 3/4)	1760-3 984 (1000-3)
WAKUS FIX MINIMUMS (DUAL VOR RECEIVERS OR DME REQUIRED)				
S-LOC 5	1140-1 372 (400-1)			
CIRCLING	1240-1 464 (500-1)	1260-1 484 (500-1)	1420-1 3/4 644 (700-1 3/4)	1760-3 984 (1000-3)

SE-1, 26 DEC 2024 to 23 JAN 2025

SE-1, 26 DEC 2024 to 23 JAN 2025