

BONHAM, TEXAS

AL-6722 (FAA)

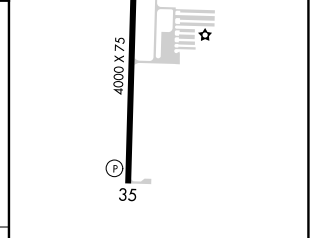
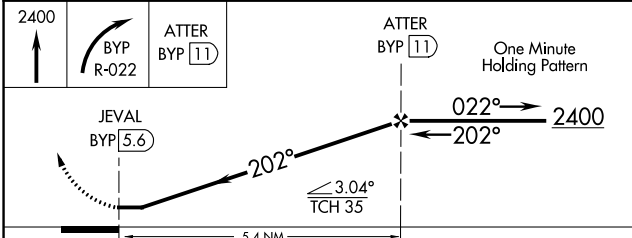
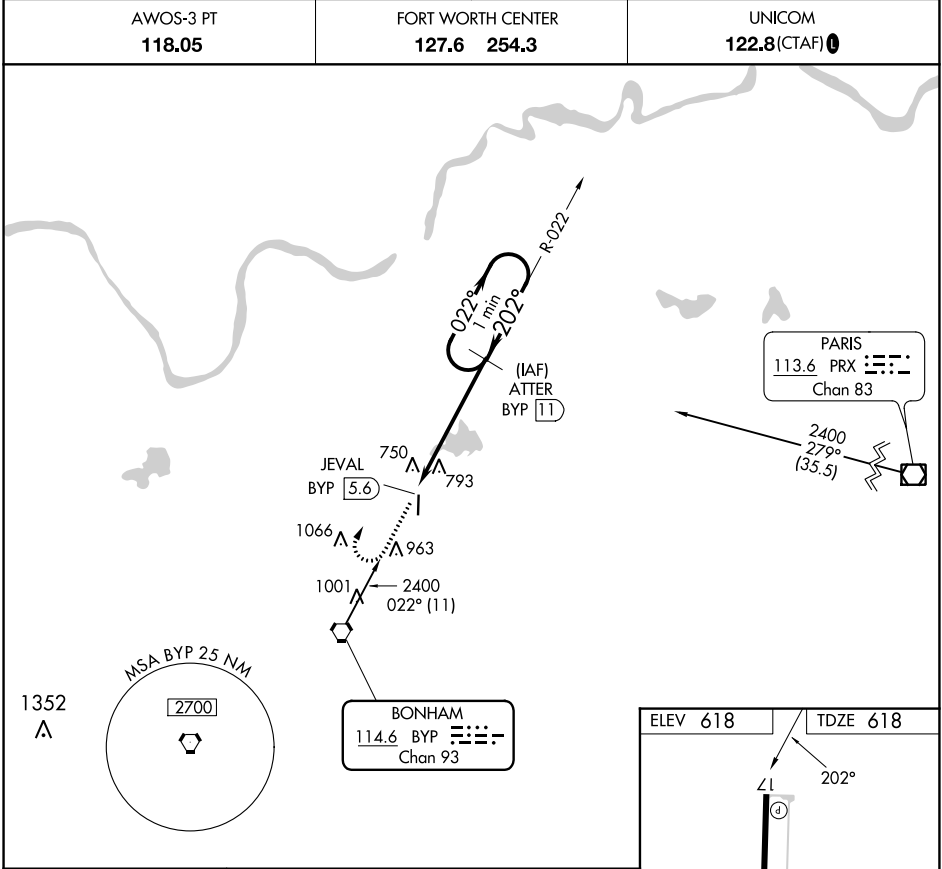
22307

| | | | |
|--|------------------------|---|-------------|
| VORTAC BYP 114.6 Chan 93 | APP CRS 202° | Rwy Idg TDZE 618 Apt Elev 618 | 4000 |
|--|------------------------|---|-------------|

VOR/DME RWY 17

JONES FLD (F00)

| | | |
|--|--|---|
| | When local altimeter setting not received, use Durant altimeter setting. | MISSED APPROACH: Climb to 2400, then right turn via BYP R-022 to ATTER/11 DME and hold. |
| | AWOS-3 PT 118.05 | FORT WORTH CENTER 127.6 254.3 |



| CATEGORY | A | B | C | D |
|----------|-----------------------|-----------------------|---|----|
| S-17 | 1200-1 | 582 (600-1) | | NA |
| CIRCLING | 1240-1 622 (700-1) | 1400-1 782 (800-1) | | NA |

MIRL Rwy 17-35

BONHAM, TEXAS
Amdt 1B 20MAY21

33°37'N-96°11'W

VOR/DME RWY 17

JONES FLD (F00)

SC-2, 26 DEC 2024 to 23 JAN 2025

SC-2, 26 DEC 2024 to 23 JAN 2025