

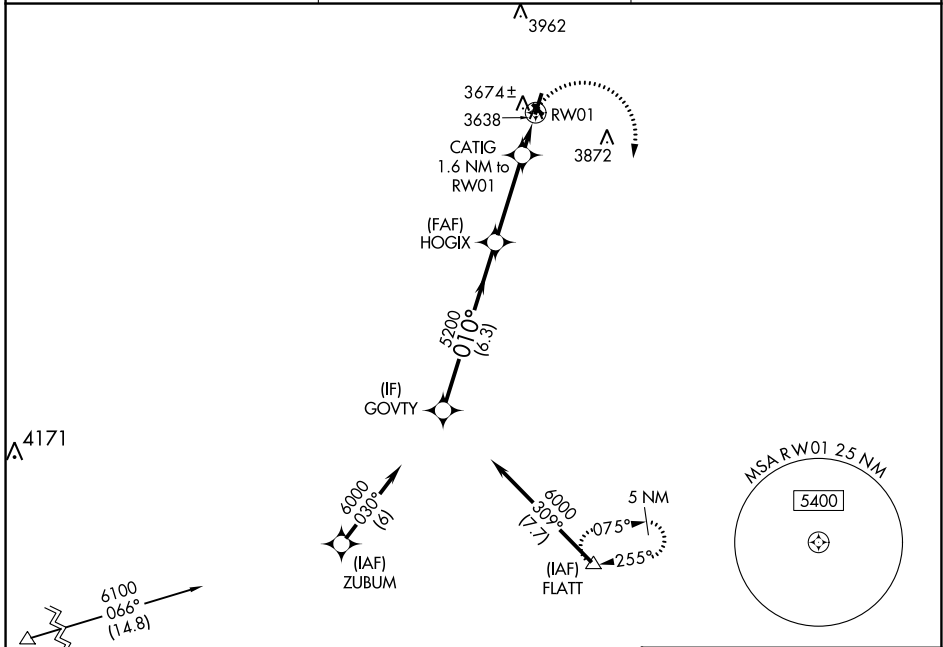
WAAS CH 66032 W01A	APP CRS 010°	Rwy Idg TDZE Apt Elev	4021 3611 3616
---------------------------------	------------------------	-----------------------------	---

RNAV (GPS) RWY 1

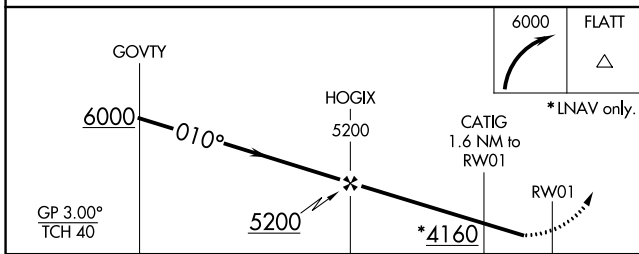
LITTLEFIELD TAYLOR BROWN MUNI (LIU)

<p>W NA Baro-VNAV NA. Use Lubbock altimeter setting, DME/DME RNP-0.3 NA. Helicopter visibility reduction below 3/4 SM NA.</p>	<p>MISSED APPROACH: Climbing right turn to 6000 direct FLATT and hold.</p>
---	--

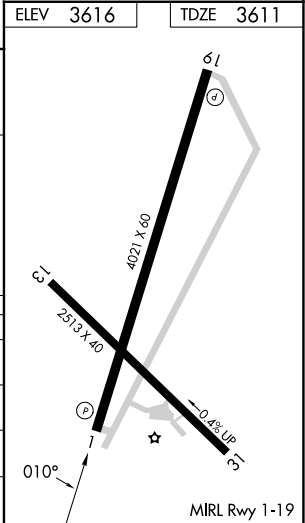
<p>LBB ASOS 125.3 270.275</p>	<p>LUBBOCK APP CON 119.2 351.8</p>	<p>UNICOM 122.8 (CTAF)</p>
--	---	---------------------------------------



ELEV 3616	TDZE 3611
-----------	-----------



CATEGORY	A	B	C	D
LPV DA	3982-1¼	371 (400-1¼)		NA
LNAV/VNAV DA	3982-1¼	371 (400-1¼)		NA
LNAV MDA	4060-1	449 (500-1)		NA
C CIRCLING	4100-1 484 (500-1)	4240-1 624 (700-1)		NA



SC-2, 26 DEC 2024 to 23 JAN 2025

SC-2, 26 DEC 2024 to 23 JAN 2025