

VOR/DME SAE 110.2 Chan 39	APP CRS 166°	Rwy Idg 4797 TDZE 3423 Apt Elev 3425
---	------------------------	---

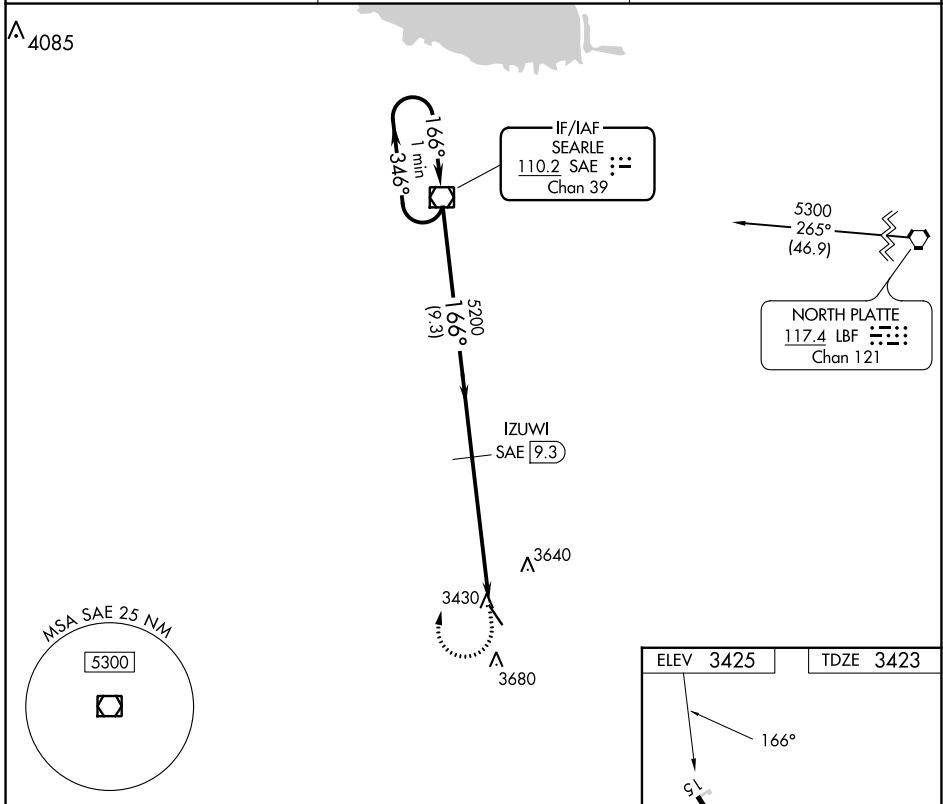
VOR/DME RWY 15

GRANT MUNI (GGF)

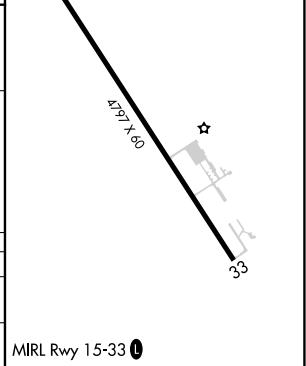
⚠ When local altimeter not received, use Ogallala altimeter setting and increase all MDA 60 feet. VDP NA with Ogallala altimeter setting.

⚠ MISSED APPROACH: Climb to 4000 then climbing right turn to 5300 direct SAE VOR/DME and hold.

AWOS-3PT 118.025	DENVER CENTER 132.7 397.85	UNICOM 122.8 (CTAF) 📻
----------------------------	--------------------------------------	--



One Minute Holding Pattern	SAE VOR/DME	4000	5300	SAE
	5300 ← 346°	→ 166°	166°	IZUWI SAE 9.3
	5200	3.06° TCH 40	SAE 13.2	SAE 14.7
	9.3 NM	3.9 NM	1.5	
CATEGORY	A	B	C	D
S-15	3940-1	517 (600-1)	NA	
📻 CIRCLING	3940-1 515 (600-1)	3980-1 555 (600-1)	NA	



NC-2, 26 DEC 2024 to 23 JAN 2025

NC-2, 26 DEC 2024 to 23 JAN 2025