

APP CRS	Rwy Idg	N/A
050°	TDZE	N/A
	Apt Elev	7411

RNAV (GPS)-B

MC ELROY AIRFIELD (20V)

RNP APCH.

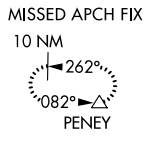
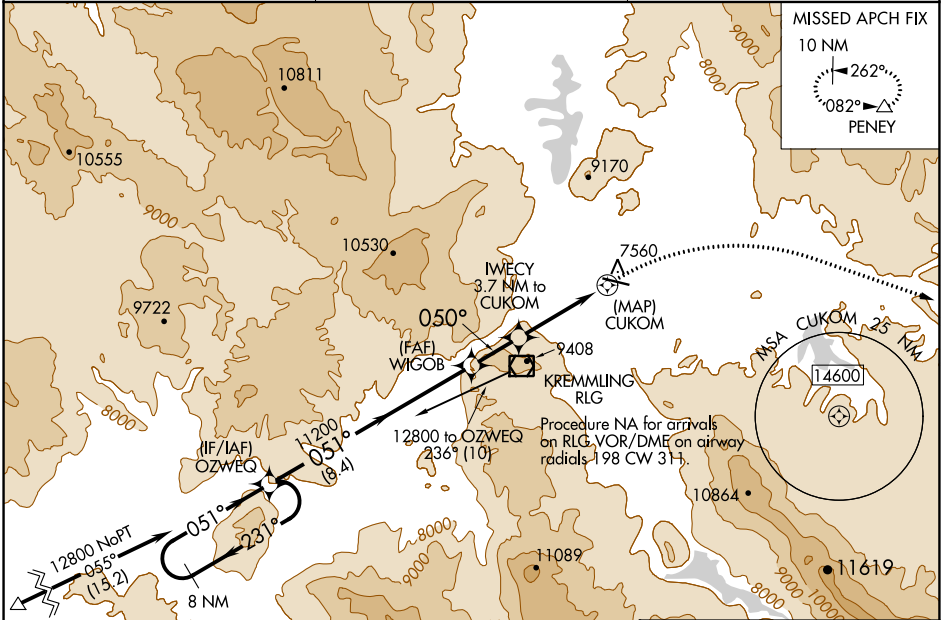
When local altimeter setting not received, procedure NA.
 Night Landing Rwy 9 NA. Circling NA south of Rwy 9-27.
 -19°C

MISSED APPROACH: Climbing right turn to 15600 direct PENEY and hold, continue climb-in-hold to 15600.

AWOS-3
118.425

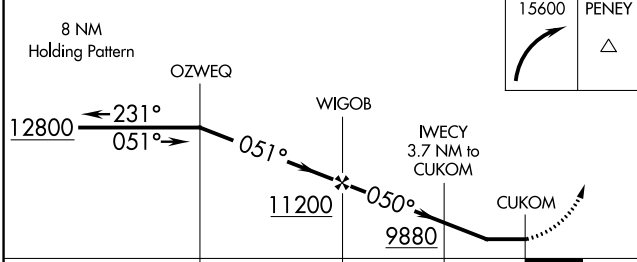
DENVER CENTER
128.65 282.2

UNICOM
122.8 (CTAF)



ELEV 7411

Procedure NA for arrivals on RLG VOR/DME on airway radials 198 CW 31°



CATEGORY	A	B	C	D
CIRCLING	9440-1¼ 2029 (2100-1¼)	9440-1½ 2029 (2100-1½)	9440-3 2029 (2100-3)	NA

REIL Rwys 9 and 27
 MIRL Rwy 9-27

SW-1, 26 DEC 2024 to 23 JAN 2025

SW-1, 26 DEC 2024 to 23 JAN 2025