

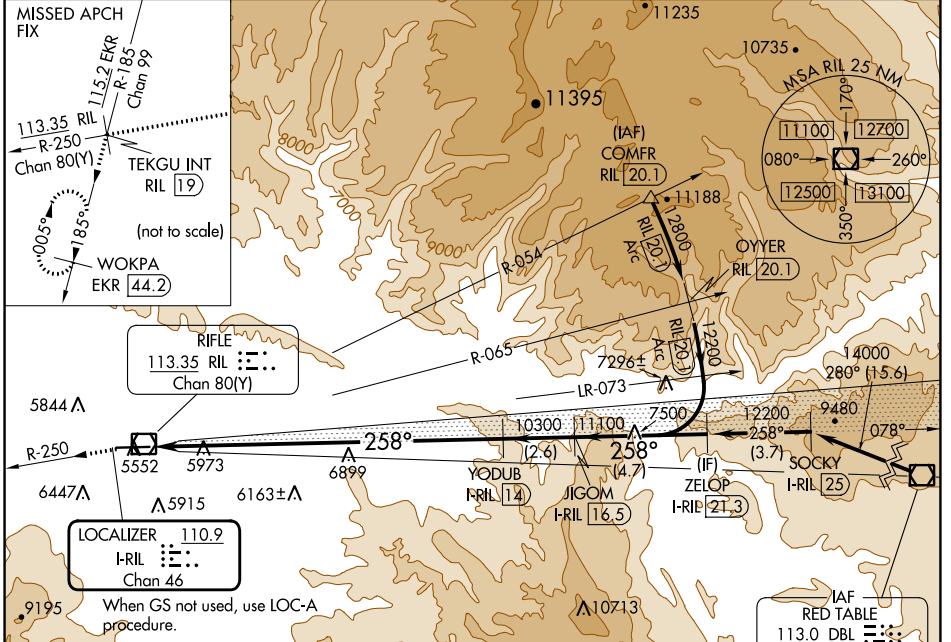
LOC/DME I-RIL <b>110.9</b> Chan 46	APP CRS <b>258°</b>	Rwy Idg TDZE Apt Elev	<b>7000</b> <b>5537</b> <b>5537</b>
--	------------------------	-----------------------------	---

# ILS RWY 26

RIFLE GARFIELD COUNTY (R.I.L.)

DME required.	ODALS .....	MISSED APPROACH: Climb to 14000 on RIL VOR/DME R-250 to TEKGU INT/RIL 19 DME and on EKR VOR/DME R-185 to WOKPA/EKR 44.2 DME and hold. Missed approach requires a minimum climb of 340 feet per NM to 10300; if unable to meet climb gradient, see LOC-A.
<p>▼</p> <p>▲ Rwy 26 helicopter visibility reduction below 3/4 SM NA.</p> <p>☁ -14°C</p>		

ASOS <b>135.275</b>	DENVER CENTER <b>134.95 327.075</b>	UNICOM <b>122.8 (CTAF) 0</b>
------------------------	--	---------------------------------

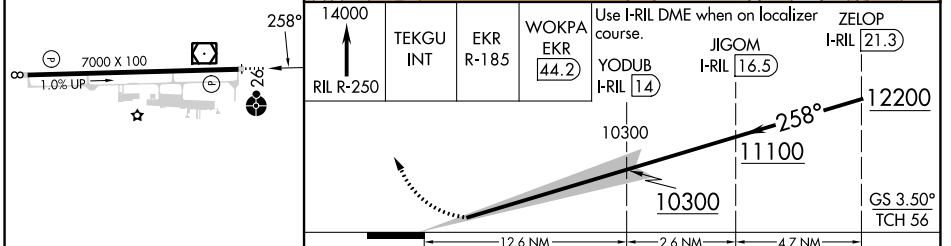


ELEV 5537	TDZE 5537
-----------	-----------

When GS not used, use LOC-A procedure.

IAF RED TABLE 113.0 DBL Chan 77

Procedure NA for arrival on DBL VOR/DME airway radials 244 CW 297.



CATEGORY	A	B	C	D
S-ILS 26		6800-4	1263 (1300-4)	

SW-1, 26 DEC 2024 to 23 JAN 2025

SW-1, 26 DEC 2024 to 23 JAN 2025