

APP CRS	Rwy Idg	<b>7000</b>
<b>259°</b>	TDZE	<b>5537</b>
	Apt Elev	<b>5537</b>

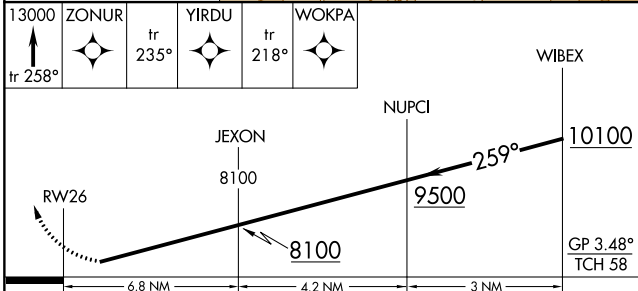
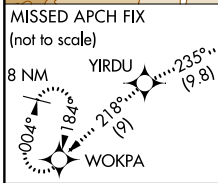
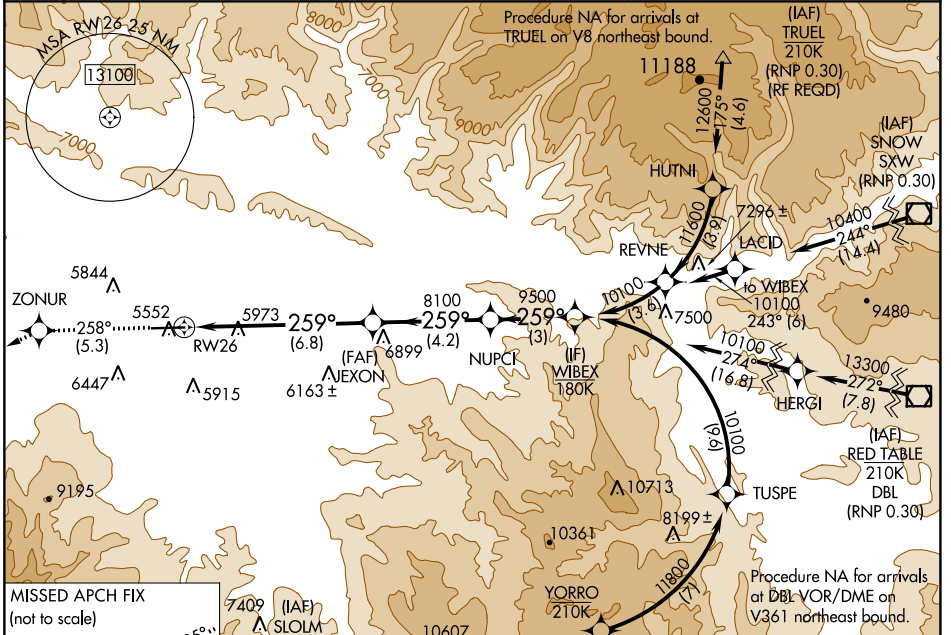
# RNAV (RNP) Y RWY 26

RIFLE GARFIELD COUNTY (R.I.L)

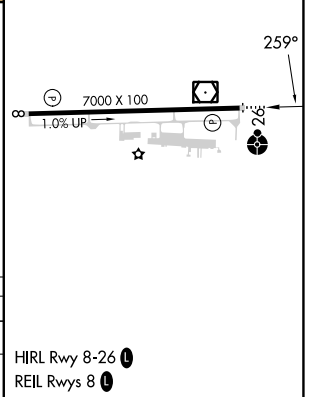
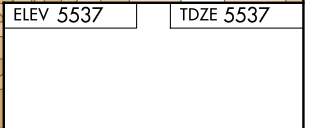
When VGSI inoperative, procedure NA at night. For uncompensated Baro-VNAV systems, procedure NA below -24°C (-11°F) or above 38°C (100°F). GPS required.

**ODALS**  
 MISSED APPROACH: Climb to 13000 on track 258° to ZONUR and track 235° to YIRDU and track 218° to WOKPA and hold, continue climb-in-hold to 13000.

ASOS <b>135.275</b>	DENVER CENTER <b>134.95 327.075</b>	UNICOM <b>122.8 (CTAF) 0</b>
------------------------	--	---------------------------------



CATEGORY	A	B	C	D
RNP 0.30 DA	6387-2½		850 (900-2½)	NA



HIRL Rwy 8-26 0

REIL Rwy 8 0

## AUTHORIZATION REQUIRED