

APP CRS	Rwy Idg	<b>7000</b>
<b>259°</b>	TDZE	<b>5537</b>
	Apt Elev	<b>5537</b>

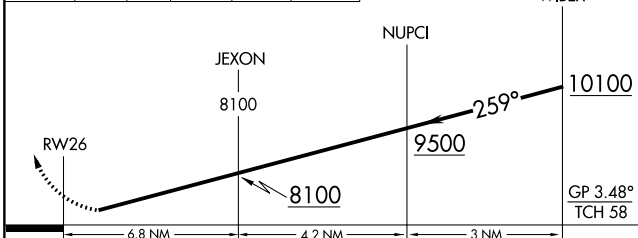
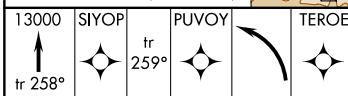
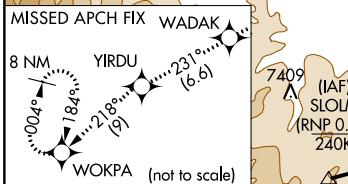
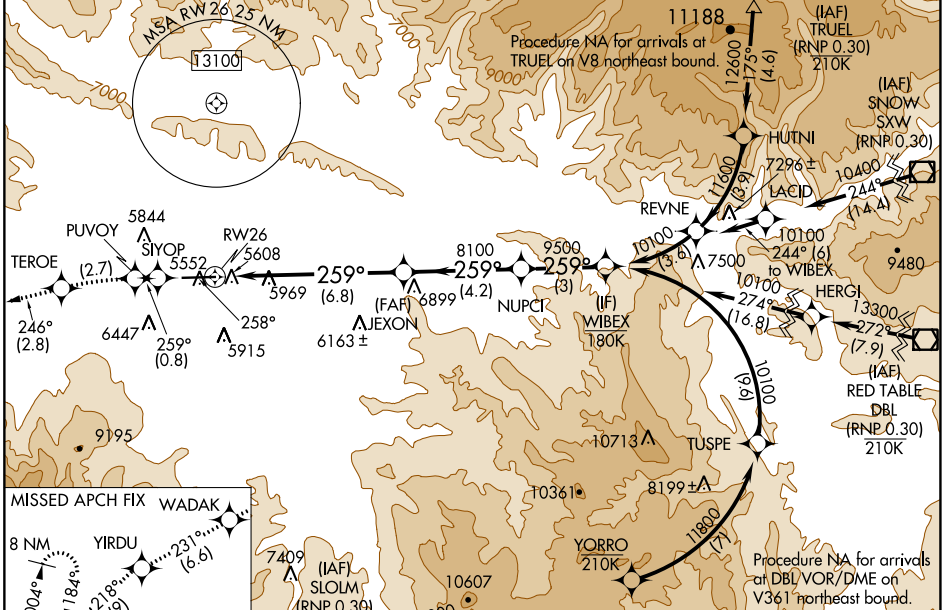
# RNAV (RNP) Z RWY 26

RIFLE GARFIELD COUNTY (R.I.L.)

When VGSJ inoperative, procedure NA at night. RF required. GPS required. Missed approach requires RNP less than 1.0. For uncompensated Baro-VNAV systems, procedure NA below -24°C (-11°F) or above 38°C (100°F). \* Missed approach requires minimum climb of 398 feet per NM to 9100.

**MISSED APPROACH:** Climb to 13000 on track 258° to SIYOP and track 259° to PUVOY left turn to TEROE and track 246° to WADAK and track 231° to YIRDU and track 218° to WOKPA and hold, continue climb-in-hold to 13000.

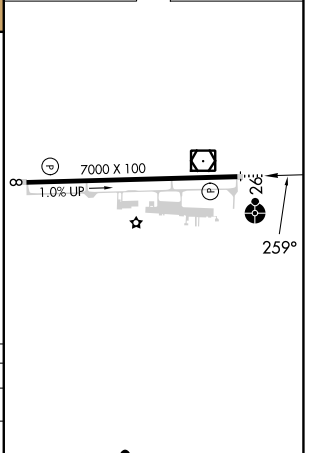
ASOS <b>135.275</b>	DENVER CENTER <b>134.95 327.075</b>	UNICOM <b>122.8 (CTAF) ①</b>
------------------------	--	---------------------------------



CATEGORY	A	B	C	D
RNP 0.10 DA*	5955-1	418 (500-1)		NA
RNP 0.30 DA	6387-2½	850 (900-2½)		NA

**AUTHORIZATION REQUIRED**

ELEV 5537	TDZE 5537
-----------	-----------



HIRL Rwy 8-26 ①  
REIL Rwy 8 ①

SW-1, 26 DEC 2024 to 23 JAN 2025

SW-1, 26 DEC 2024 to 23 JAN 2025