


APP CRS	Rwy Idg	7000
259°	TDZE	5537
	Apt Elev	5537

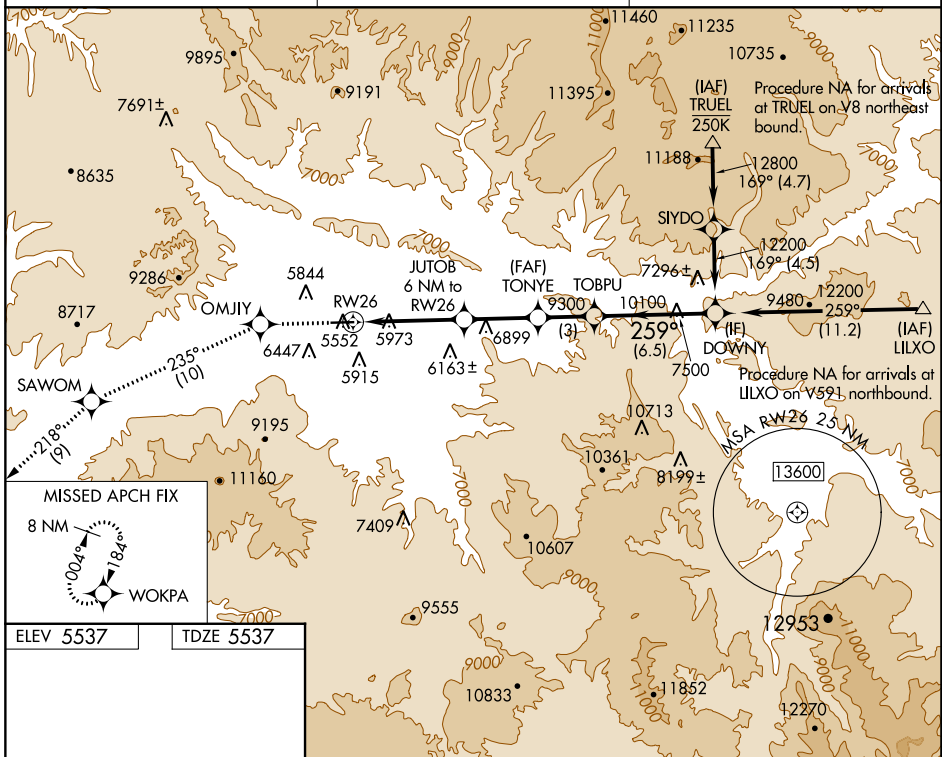
RNAV (GPS) W RWY 26

RIFLE GARFIELD COUNTY (RIL)

RNP APCH - GPS.
 Rwy 26 helicopter visibility reduction below 3/4 SM NA.
 Inop table does not apply. Circling NA south of
 -14°C Rwy 8-26 at night.

ODALS

 MISSED APPROACH: Climb to 14000 direct OMJIY and on track 235° to SAWOM and on track 218° to WOKPA and hold, continue climb-in-hold to 14000.

ASOS 135.275	DENVER CENTER 134.95 327.075	UNICOM 122.8 (CTAF) 0
------------------------	--	---------------------------------



ELEV 5537	TDZE 5537
-----------	-----------

HIRL Rwy 8-26 0
 REIL Rwy 8 0

14000	OMJIY	tr 235°	SAWOM	tr 218°	WOKPA	DOWNY
			JUTOB 6 NM to RW26	TONYE		
			4.3 NM to RW26	7820	9300	12200
			1.7 NM	4 NM	3 NM	6.5 NM
CATEGORY	A	B	C	D		
LNAV MDA	7220-1¼ 1683 (1700-1¼)	7220-1½ 1683 (1700-1½)	7220-3 1683 (1700-3)	1683 (1700-3)		
CIRCLING	7220-1¼ 1683 (1700-1¼)	7220-1½ 1683 (1700-1½)	7220-3 1683 (1700-3)	8100-3 2563 (2600-3)		

SW-1, 26 DEC 2024 to 23 JAN 2025

SW-1, 26 DEC 2024 to 23 JAN 2025