

APP CRS	Rwy Idg	<b>7000</b>
<b>068°</b>	TDZE	<b>5498</b>
	Apt Elev	<b>5537</b>

# RNAV (GPS) Y RWY 8

RIFLE GARFIELD COUNTY (RIL)

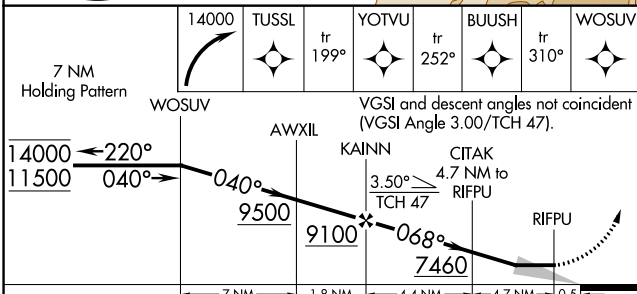
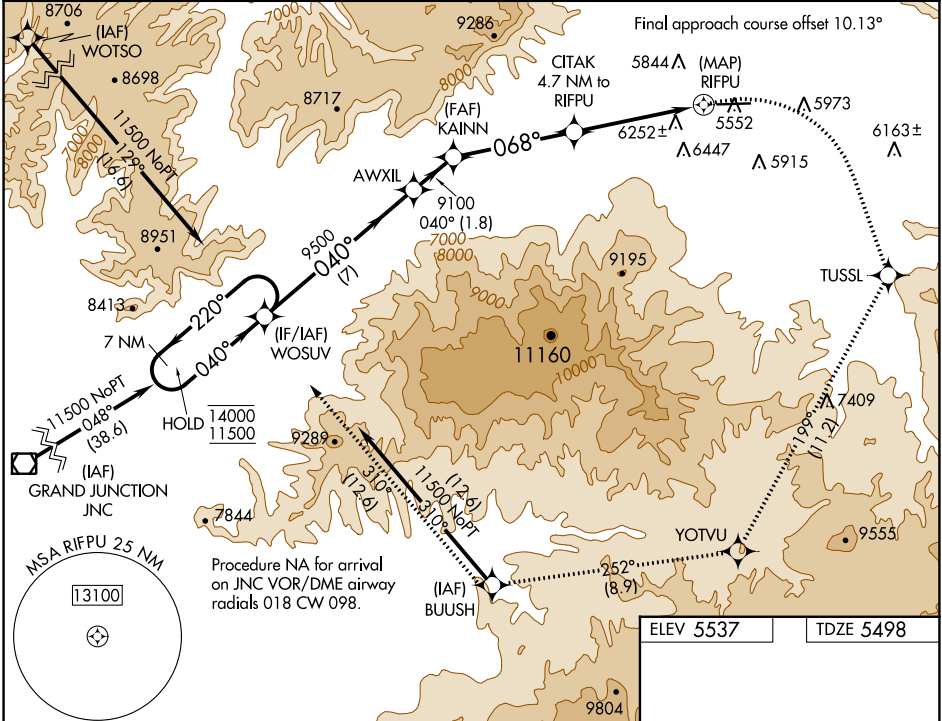
RNP APCH - GPS.

**⚠** Circling NA south of Rwy 8-26 at night.

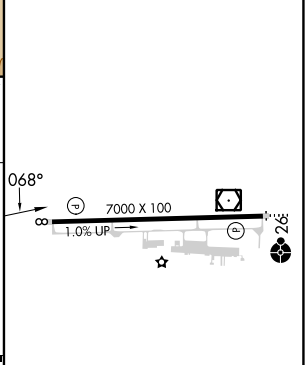
**❄** -14°C

MISSED APPROACH: Climbing right turn to 14000 direct TUSSL and on track 199° to YOTVU and on track 252° to BUUSH and on track 310° to WOSUV and hold, continue climb-in-hold to 14000.

ASOS <b>135.275</b>	DENVER CENTER <b>134.95 327.075</b>	UNICOM <b>122.8 (CTAF) 0</b>
------------------------	--	---------------------------------



ELEV 5537	TDZE 5498
-----------	-----------



CATEGORY	A	B	C	D
LNVA MDA	7420-1¼ 1922 (1900-1¼)	7420-1½ 1922 (1900-1½)	7420-3 1922 (1900-3)	
CIRCLING	7420-1¼ 1883 (1900-1¼)	7420-1½ 1883 (1900-1½)	7420-3 1883 (1900-3)	8100-3 2563 (2600-3)

HIRL Rwy 8-26 **0**

REIL Rwy 8 **0**

SW-1, 26 DEC 2024 to 23 JAN 2025

SW-1, 26 DEC 2024 to 23 JAN 2025