

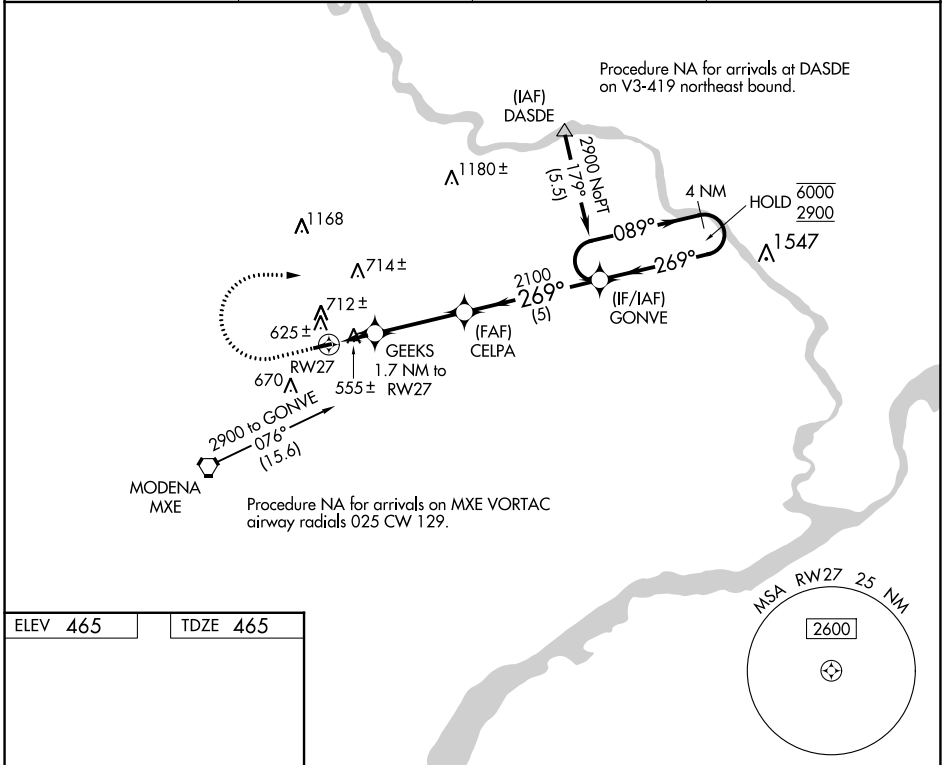
WAAS CH <b>86637</b> <b>W27A</b>	APP CRS <b>269°</b>	Rwy Idg TDZE Apt Elev	<b>3098</b> <b>465</b> <b>465</b>
--	------------------------	-----------------------------	---

# RNAV (GPS) RWY 27

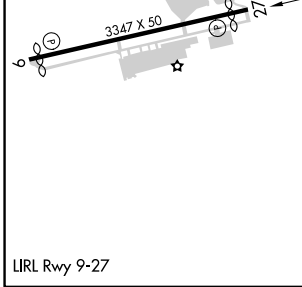
BRANDYWINE RGNL (OQN)

RNP APCH - GPS.		MISSED APPROACH: Climb to 1500 then climbing right turn to 2900 direct GONVE and hold.	
<p><b>⚠</b> Rwy 27 helicopter visibility reduction below 3/4 SM NA. When local altimeter setting not received, use Coatesville altimeter setting and increase all MDAs 60 feet.</p>			

AWOS-3T <b>121.4</b>	PHILADELPHIA APP CON <b>124.35 319.15</b>	CLNC DEL <b>125.6</b>	UNICOM <b>123.075 (CTAF)</b>
-------------------------	--	--------------------------	---------------------------------



ELEV 465	TDZE 465
----------	----------



1500	2900	GONVE	VGSI and descent angles not coincident (VGSI Angle 3.00/TCH 20).	
<p>GONVE 4 NM Holding Pattern</p>		<p>GEEKS 1.7 NM to RW27</p> <p>CELPA</p> <p>RW27 1.1 NM to RW27</p> <p>3.00° TCH 45</p> <p>2100</p> <p>1040</p>		
<p>1.1 NM</p>		<p>0.6 NM</p>		
<p>3.3 NM</p>		<p>5 NM</p>		
CATEGORY	A	B	C	D
LP MDA	820-1	355 (400-1)		NA
LNAV MDA	860-1	395 (400-1)		NA
<input checked="" type="checkbox"/> CIRCLING	1080-1	615 (700-1)		NA

NE-4, 26 DEC 2024 to 23 JAN 2025

NE-4, 26 DEC 2024 to 23 JAN 2025