

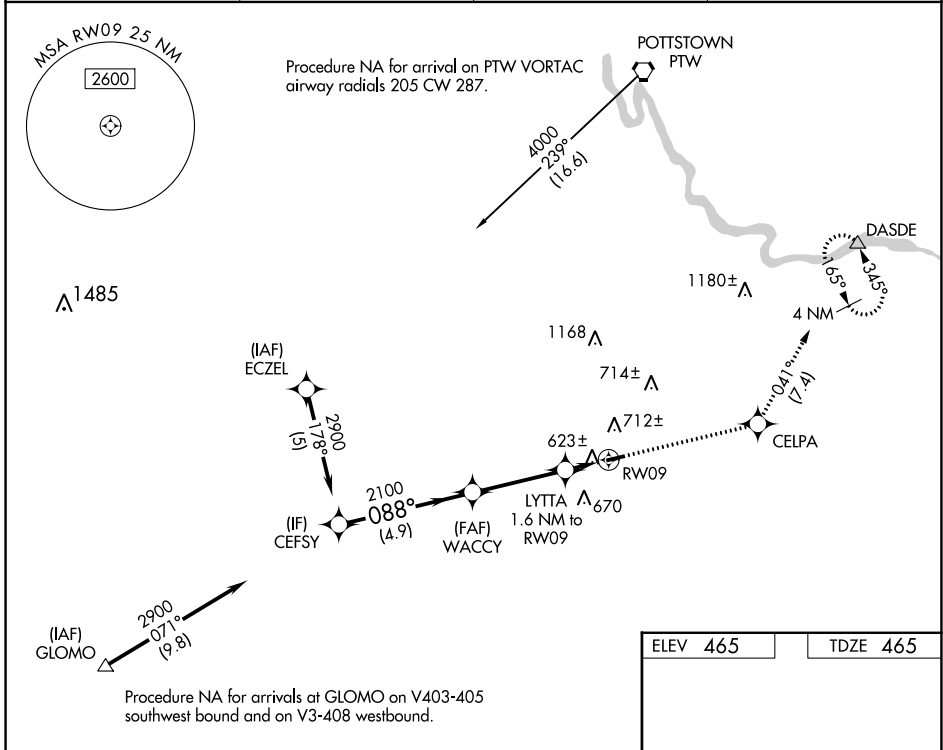
APP CRS	Rwy Idg	3222
088°	TDZE	465
	Apt Elev	465

RNAV (GPS) Z RWY 9

BRANDYWINE RGNL (OQN)

RNP APCH - GPS.	MISSED APPROACH: Climb to 2900 direct CELPA and left turn on track 041° to DASDE and hold.
<p>▼ Rwy 9 helicopter visibility reduction below 3/4 SM NA. When local altimeter setting not received, use Coatesville altimeter setting and increase all MDAs 60 feet.</p> <p>▲</p>	

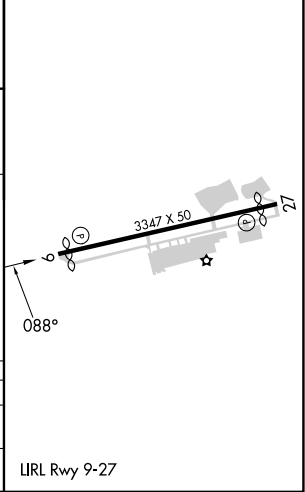
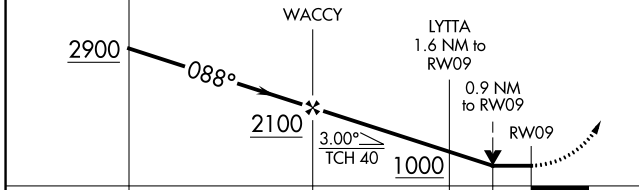
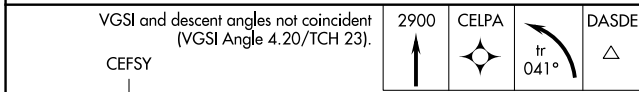
AWOS-3T 121.4	PHILADELPHIA APP CON 124.35 319.15	CLNC DEL 125.6	UNICOM 123.075 (CTAF)
-------------------------	--	--------------------------	---------------------------------



NE-4, 26 DEC 2024 to 23 JAN 2025

NE-4, 26 DEC 2024 to 23 JAN 2025

ELEV 465	TDZE 465
----------	----------



CATEGORY	A	B	C	D
LNAV MDA	880-1	415 (500-1)		NA
C CIRCLING	1020-1	555 (600-1)		NA