

WEST CHESTER, PENNSYLVANIA

AL-6742 (FAA)

23222

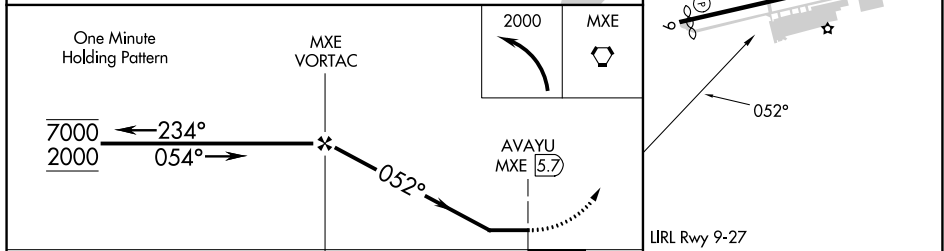
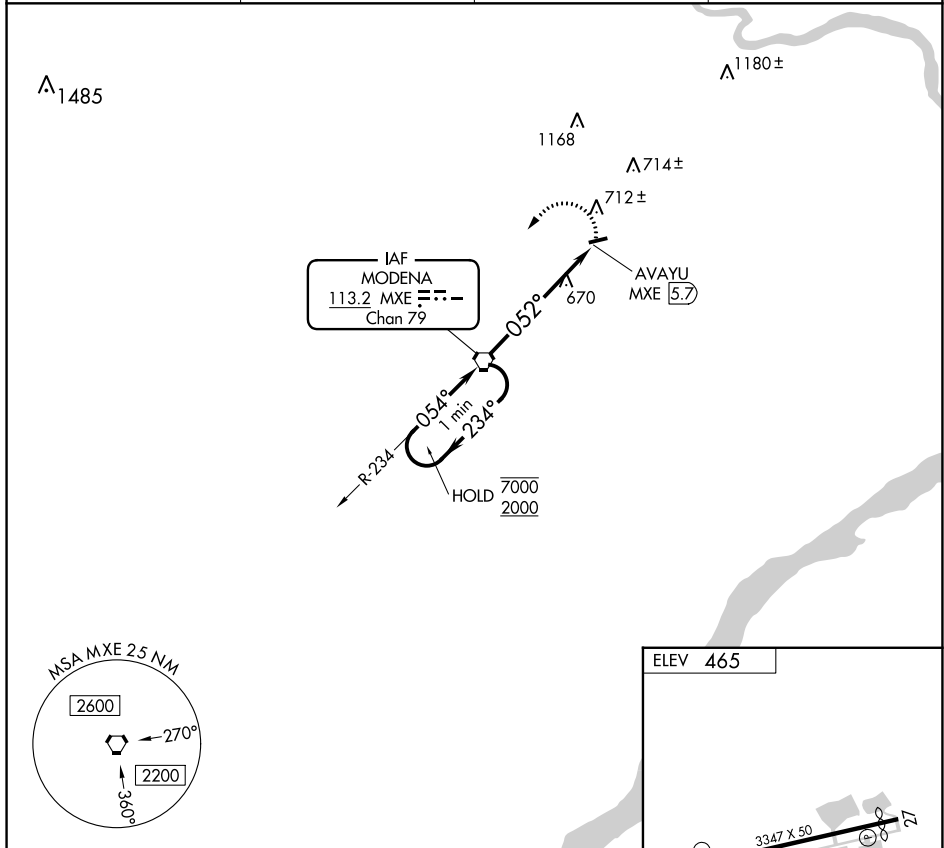
VORTAC MXE 113.2 Chan 79	APP CRS 052°	Rwy Idg TDZE Apt Elev	N/A N/A 465
---------------------------------------	------------------------	-----------------------------	--

VOR-A
BRANDYWINE RGNL (OQN)

⚠ When local altimeter setting not received, use Coatesville altimeter setting and increase all MDA's 60 feet.

MISSED APPROACH: Climbing left turn to 2000 direct MXE VORTAC and hold.

AWOS-3T 121.4	PHILADELPHIA APP CON 124.35 319.15	CLNC DEL 125.6	UNICOM 123.075 (CTAF)
-------------------------	--	--------------------------	---------------------------------



CATEGORY	A	B	C	D
C CIRCLING	1080-1	615 (700-1)		NA

FAF to MAP 5.7 NM					
Knots	60	90	120	150	180
Min:Sec	5:42	3:48	2:51	2:17	1:54

WEST CHESTER, PENNSYLVANIA
Amdt 4C 10AUG23

39°59'N-75°35'W

BRANDYWINE RGNL (OQN)
VOR-A

NE-4, 26 DEC 2024 to 23 JAN 2025

NE-4, 26 DEC 2024 to 23 JAN 2025