

CALDWELL, TEXAS

AL-6743 (FAA)

24361

APP CRS	Rwy Idg	<b>3252</b>
<b>146°</b>	TDZE	<b>391</b>
	Apt Elev	<b>391</b>

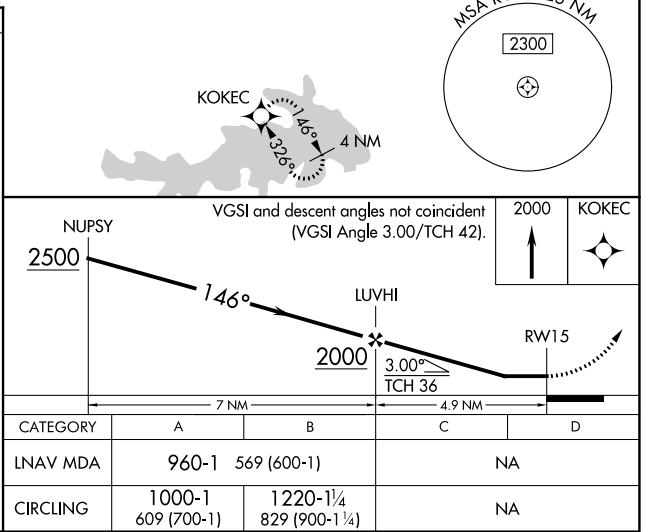
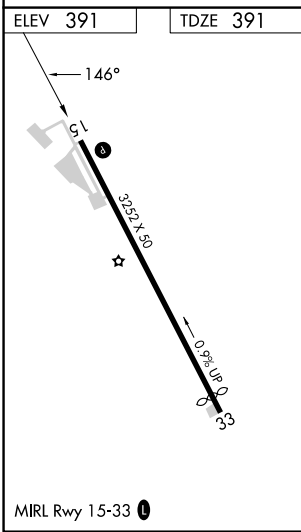
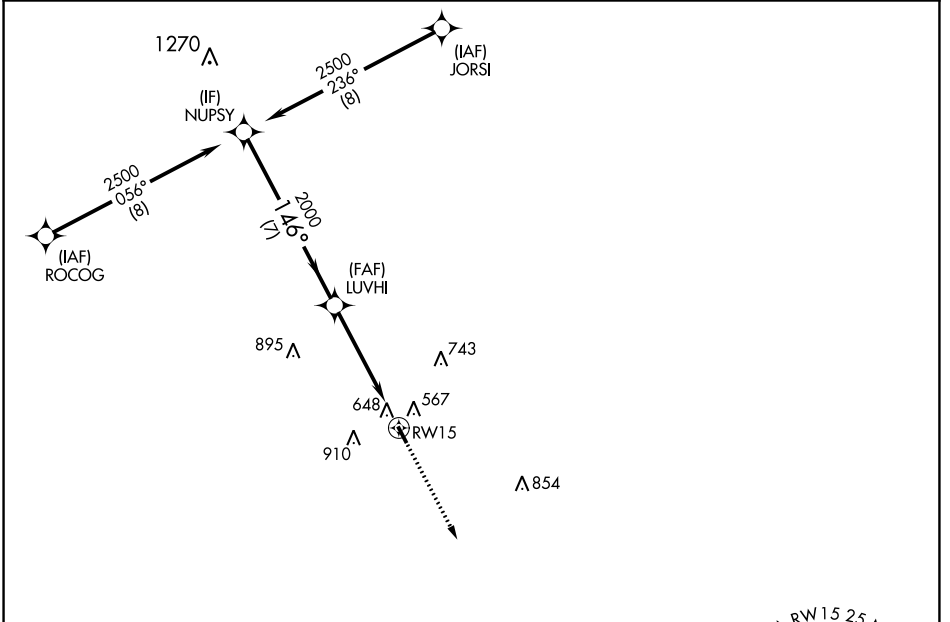
# RNAV (GPS) RWY 15

CALDWELL MUNI (RWV)

RNP APCH - GPS.  
 RADAR required.  
 ⚠ When local altimeter setting not received, use College Station altimeter setting and increase all MDA 60 feet. Circling NA east of Rwy 15-33. Procedure NA at night. Rwy 15 helicopter visibility reduction below 1 SM NA.

MISSED APPROACH: Climb to 2000 direct KOKEC and hold.

AWOS-3PT <b>118.35</b>	HOUSTON APP CON <b>134.3 360.85</b>	CTAF <b>122.9</b>
---------------------------	--	----------------------



CALDWELL, TEXAS  
 Orig-C 26DEC24

30°31'N-96°42'W

# CALDWELL MUNI (RWV)

## RNAV (GPS) RWY 15

SC-5, 26 DEC 2024 to 23 JAN 2025