

| | | |
|-------------|----------|-------------|
| APP CRS | Rwy Idg | 3010 |
| 326° | TDZE | 390 |
| | Apt Elev | 391 |

RNAV (GPS) RWY 33

CALDWELL MUNI (RWV)

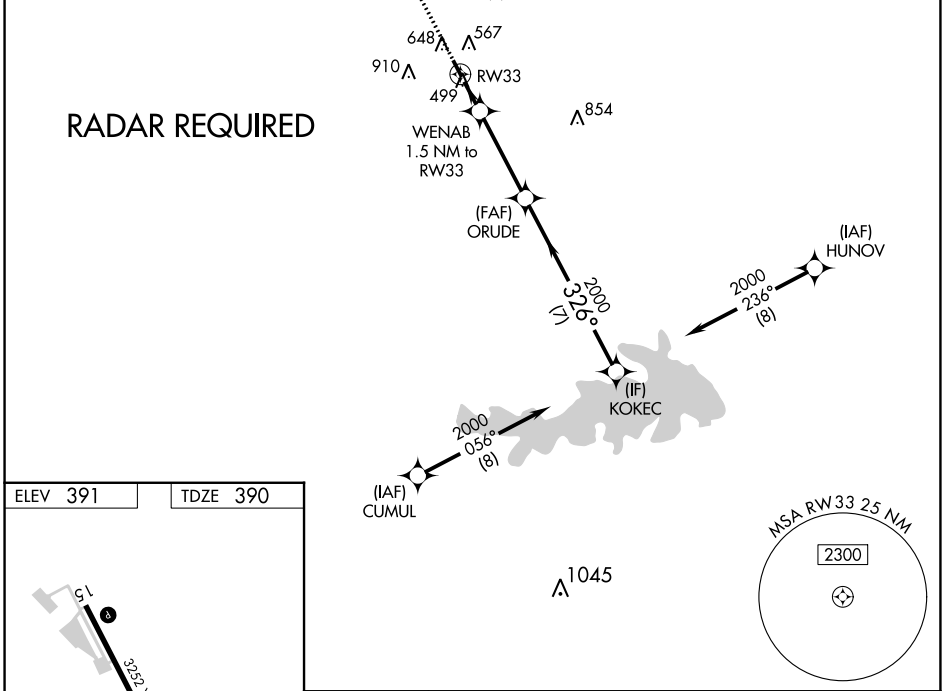
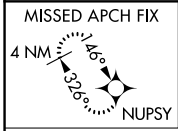
⚠ When local altimeter setting not received, use College Station altimeter setting and increase all MDA 60 feet. Circling NA east of Rwy 15-33. DME/DME RNP-0.3 NA. Procedure NA at night. Rwy 33 helicopter visibility reduction below 1 SM NA.

MISSED APPROACH: Climb to 2500 direct NUPSY and hold.

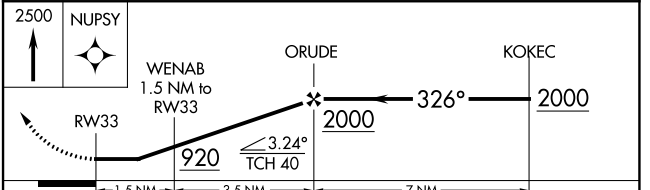
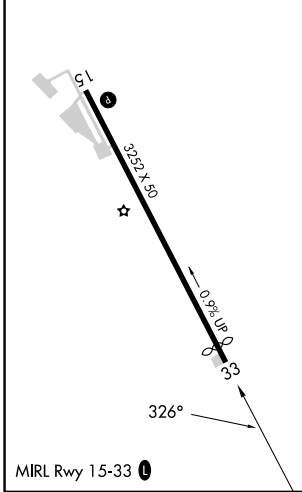
AWOS-3PT
118.35

HOUSTON APP CON
134.3 360.85

CTAF
122.9



| | |
|----------|----------|
| ELEV 391 | TDZE 390 |
|----------|----------|



| | | | | |
|----------|-----------------------|-------------------------|----|---|
| CATEGORY | A | B | C | D |
| LNAV MDA | 760-1 | 370 (400-1) | NA | |
| CIRCLING | 1000-1 609 (700-1) | 1220-1¼ 829 (900-1¼) | NA | |

SC-5, 26 DEC 2024 to 23 JAN 2025

SC-5, 26 DEC 2024 to 23 JAN 2025