

APP CRS	Rwy Idg	3201
052°	TDZE	84
	Apt Elev	85

RNAV (GPS) RWY 5

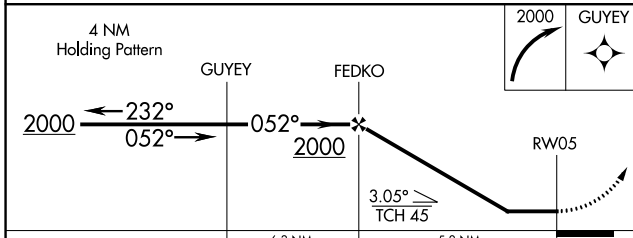
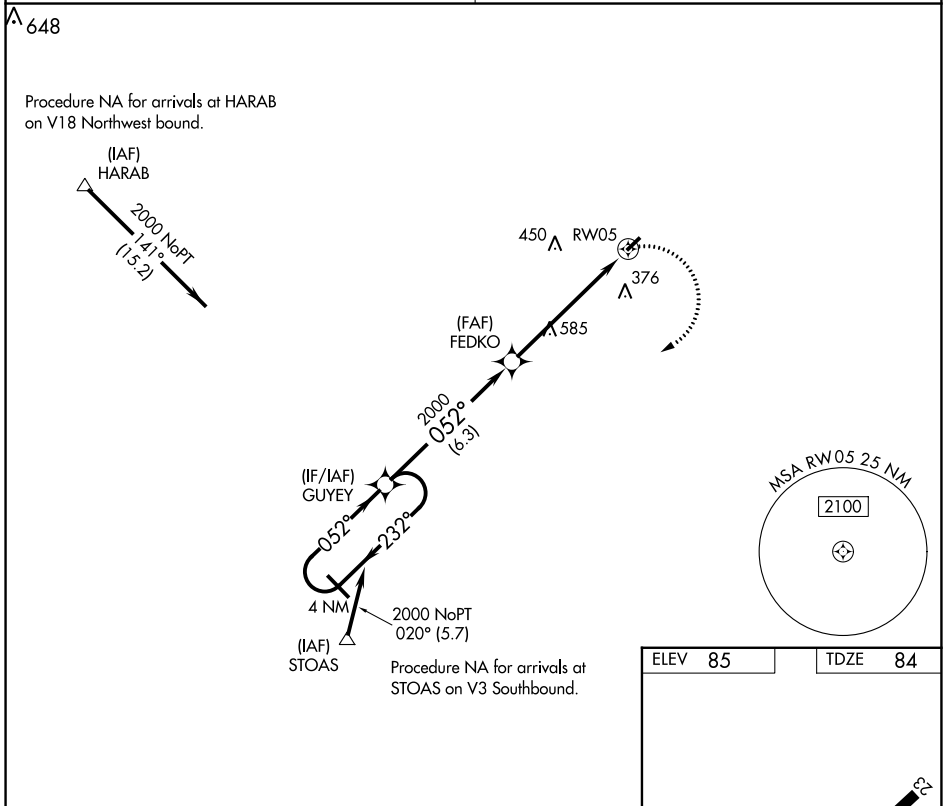
ST GEORGE (6J2)

▼ DME/DME RNP-0.3 NA. Helicopter visibility reduction below 1 SM NA. Use Summerville altimeter setting; when not received, use Charleston altimeter setting and increase all MDAs 40 feet, increase LNAV and Circling Cat C visibility ¼ mile, increase LNAV and Circling Cat D visibility ½ mile. Procedure NA at night.

▲ NA

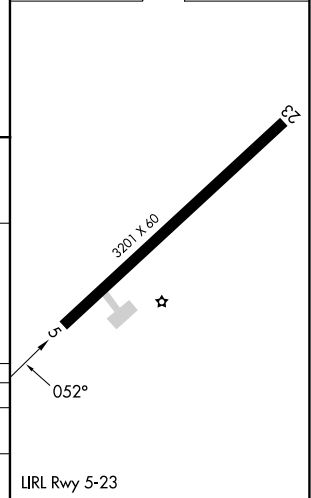
MISSED APPROACH: Climbing right turn to 2000 direct GUYEY and hold.

CHARLESTON APP CON 120.7 306.925	UNICOM 122.8 (CTAF)
--	-------------------------------



ELEV 85	TDZE 84
---------	---------

CATEGORY	A	B	C	D
LNAV MDA	940-1¼ 856 (900-1¼)	940-2½ 856 (900-2½)	940-2¾ 856 (900-2¾)	940-2¾ 856 (900-2¾)
CIRCLING	940-1¼ 855 (900-1¼)	940-2½ 855 (900-2½)	940-2¾ 855 (900-2¾)	940-2¾ 855 (900-2¾)



SE-2, 26 DEC 2024 to 23 JAN 2025

SE-2, 26 DEC 2024 to 23 JAN 2025