

WAAS CH <b>78027</b> <b>W30A</b>	APP CRS <b>298°</b>	Rwy Idg TDZE Apt Elev	<b>4268</b> <b>2613</b> <b>2615</b>
--	------------------------	-----------------------------	---

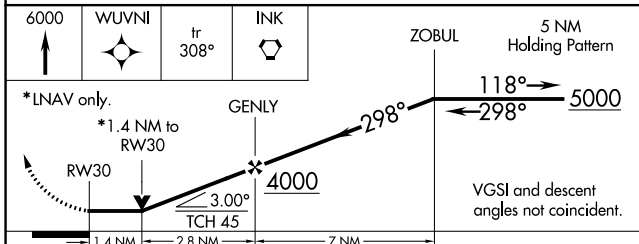
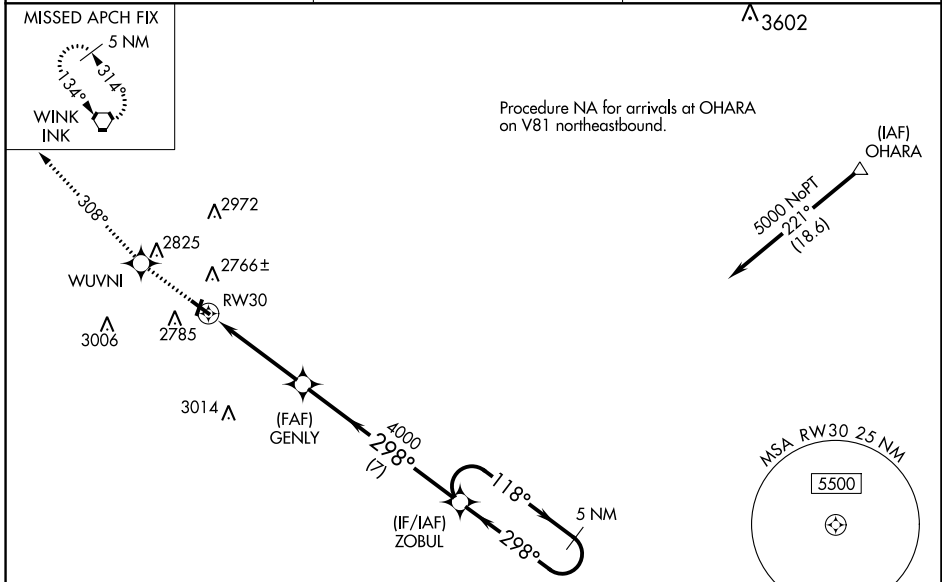
# RNAV (GPS) RWY 30

ROY HURD MEML (E01)

**⚠** DME/DME RNP-0.3 NA. VDP NA with Wink altimeter setting. Obtain local altimeter setting on CTAF, when not received, use Wink altimeter setting. Night landing: Rwy 12 NA. Helicopter visibility reduction below 3/4 SM NA.

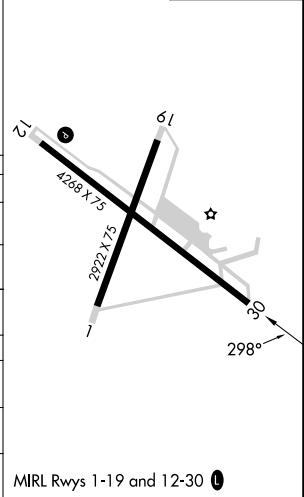
**⚠** MISSED APPROACH: Climb to 6000 direct WUVNI and on track 308 to INK VORTAC and hold.

AWOS-3PT <b>118.225</b>	FORT WORTH CENTER <b>133.1 298.95</b>	UNICOM <b>122.8 (CTAF)</b>
----------------------------	--	-------------------------------



ELEV 2615	TDZE 2613
-----------	-----------

CATEGORY	A	B	C	D
LP MDA	3080-1	467 (500-1)	3080-1 <sup>3</sup> / <sub>8</sub> 467 (500-1 <sup>3</sup> / <sub>8</sub> )	NA
RNAV MDA	3100-1	487 (500-1)	3100-1 <sup>3</sup> / <sub>8</sub> 487 (500-1 <sup>3</sup> / <sub>8</sub> )	NA
CIRCLING	3280-1	665 (700-1)	3280-1 <sup>3</sup> / <sub>4</sub> 665 (700-1 <sup>3</sup> / <sub>4</sub> )	NA
WINK ALTIMETER SETTING MINIMUMS				
LP MDA	3160-1	547 (600-1)	3160-1 <sup>3</sup> / <sub>8</sub> 547 (600-1 <sup>3</sup> / <sub>8</sub> )	NA
RNAV MDA	3180-1	567 (600-1)	3180-1 <sup>3</sup> / <sub>8</sub> 567 (600-1 <sup>3</sup> / <sub>8</sub> )	NA
CIRCLING	3360-1	745 (800-1)	3360-2 <sup>1</sup> / <sub>4</sub> 745 (800-2 <sup>1</sup> / <sub>4</sub> )	NA



SC-3, 26 DEC 2024 to 23 JAN 2025

SC-3, 26 DEC 2024 to 23 JAN 2025