

APP CRS <b>354°</b>	Rwy Idg <b>5001</b>
	TDZE <b>1193</b>
	Apt Elev <b>1193</b>

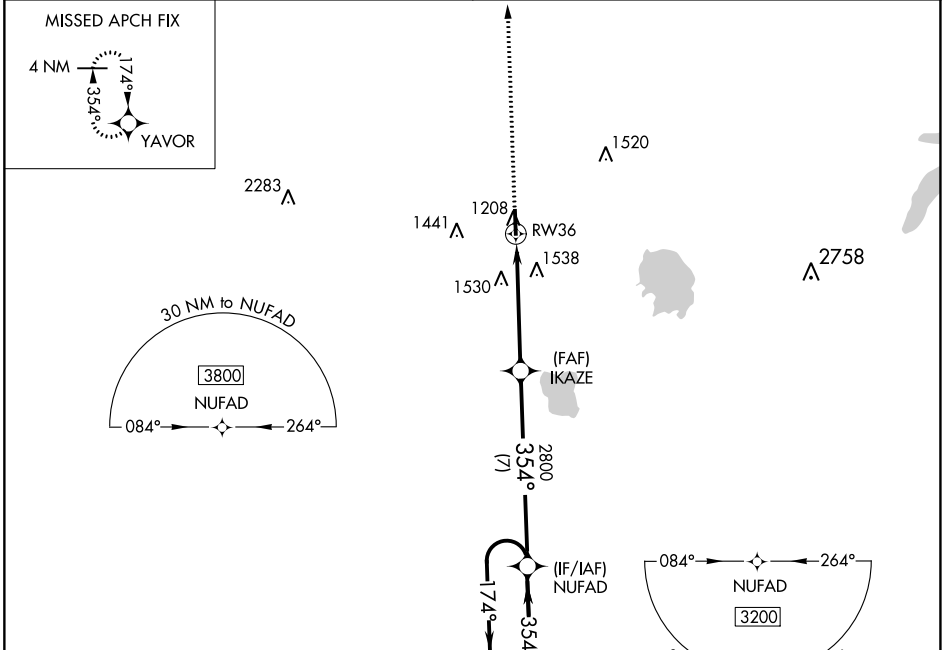
# RNAV (GPS) RWY 36

SUNDANCE (HSD)

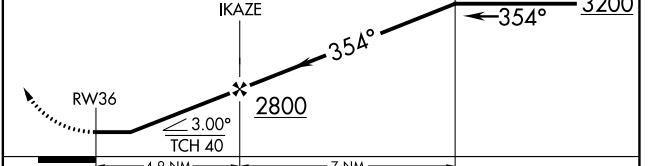
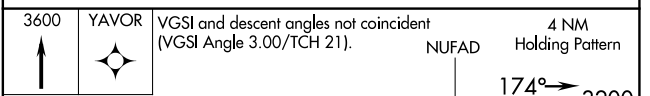
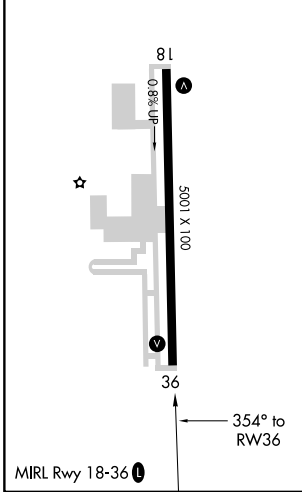
**⚠** Rwy 36 helicopter visibility reduction below 1 SM NA. DME/DME RNP-0.3 NA.  
**⚠** Straight-in Rwy 36 NA at night, Circling Rwy 36 NA at night.

MISSED APPROACH: Climb to 3600 direct YAVOR and hold.

AWOS-3 <b>120.975</b>	OKE CITY APP CON <b>124.6 266.8</b>	CLNC DEL <b>123.7</b>	UNICOM <b>122.7 (CTAF)</b>
--------------------------	--	--------------------------	-------------------------------



ELEV 1193	TDZE 1193
-----------	-----------



CATEGORY	A	B	C	D
LNAV MDA	1780-1	587 (600-1)	1780-1 <sup>3</sup> / <sub>4</sub> 587 (600-1 <sup>3</sup> / <sub>4</sub> )	NA
CIRCLING	1780-1 587 (600-1)	1840-1 647 (700-1)	1840-1 <sup>3</sup> / <sub>4</sub> 647 (700-1 <sup>3</sup> / <sub>4</sub> )	NA

SC-1, 26 DEC 2024 to 23 JAN 2025

SC-1, 26 DEC 2024 to 23 JAN 2025