

WAAS CH <b>69418</b> <b>W25A</b>	APP CRS <b>247°</b>	Rwy Idg <b>3434</b> TDZE <b>8</b> Apt Elev <b>9</b>
--	------------------------	---

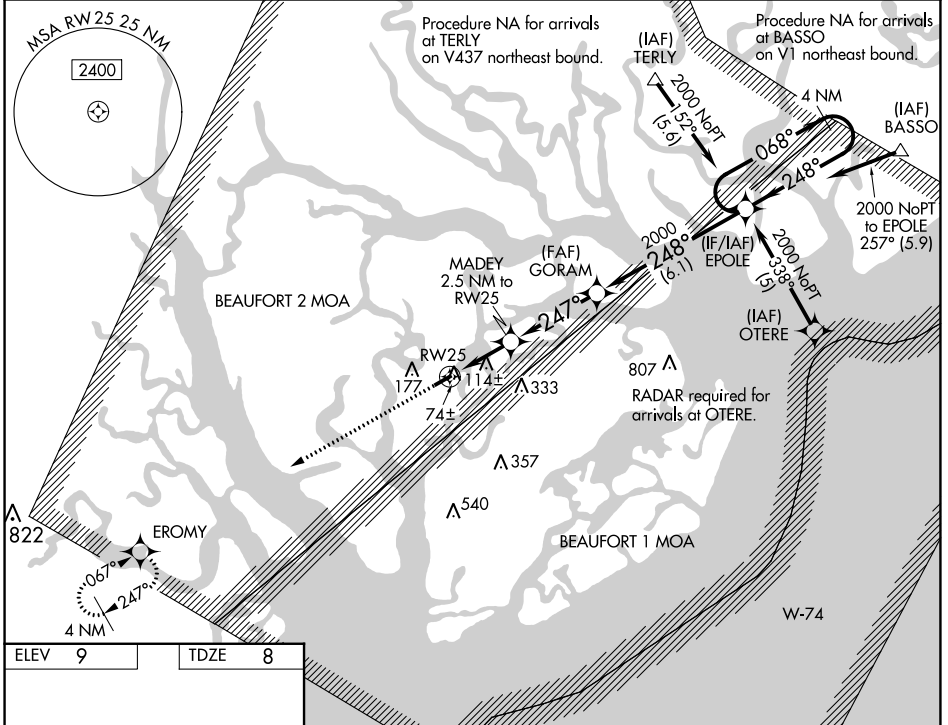
# RNAV (GPS) RWY 25

BEAUFORT EXEC (A.R.W)

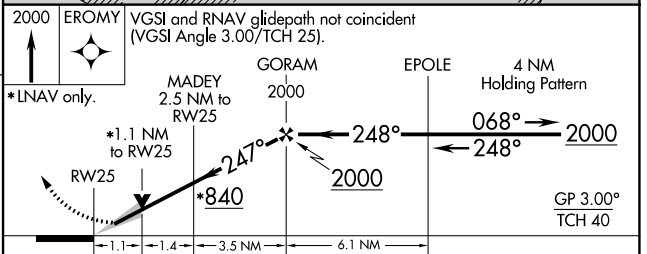
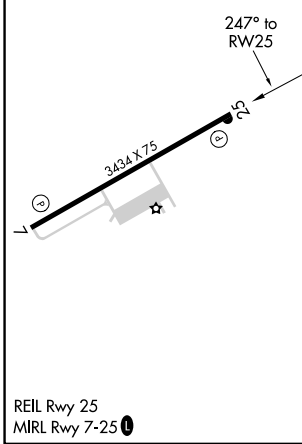
**ASR** For uncompensated Baro-VNAV systems, LNAV/VNAV NA below -15°C (5°F) or above 54°C (130°F). DME/DME RNP-0.3 NA. When local altimeter setting not received, use Beaufort MCAS (Merritt Fld) altimeter setting and increase LPV DA to 226, LNAV/VNAV DA to 352, and all MDA 20 feet. VDP and Baro-VNAV NA when using Beaufort MCAS (Merritt Fld) altimeter setting.

**MISSED APPROACH:** Climb to 2000 direct EROMY and hold.

AWOS-3 <b>119.675</b>	BEAUFORT APP CON* <b>125.125 292.125</b>	UNICOM <b>122.7 (CTAF)</b>
--------------------------	---	-------------------------------



ELEV <b>9</b>	TDZE <b>8</b>
---------------	---------------



CATEGORY	A	B	C	D
LPV DA		208-1	200 (200-1)	NA
LNAV/VNAV DA		334-1¼	326 (400-1¼)	NA
LNAV MDA		380-1	372 (400-1)	NA
CIRCLING	480-1	471 (500-1)	640-1¾ 631 (700-1¾)	NA

SE-2, 26 DEC 2024 to 23 JAN 2025

SE-2, 26 DEC 2024 to 23 JAN 2025