

APP CRS	Rwy Idg	3434
067°	TDZE	9
	Apt Elev	9

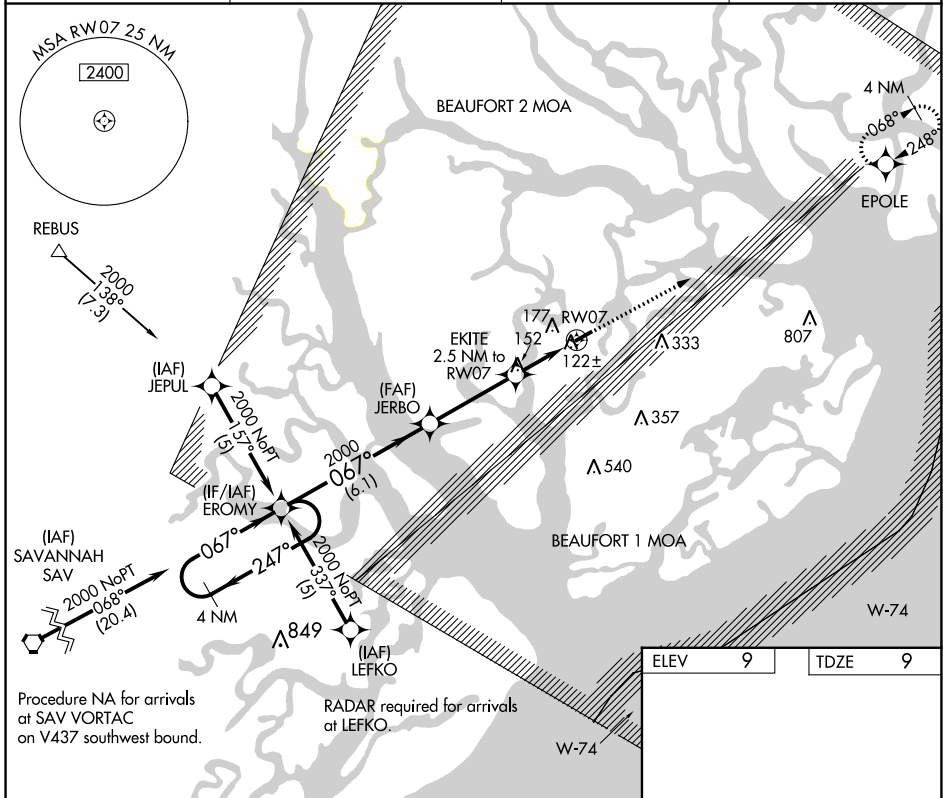
RNAV (GPS) RWY 7

BEAUFORT EXEC (ARW)

▼ DME/DME RNP-0.3 NA. Helicopter visibility reduction below 3/4 SM NA.
▲ When local altimeter setting not received, use Beaufort MCAS (Merritt Flt) ASR altimeter setting and increase all MDA 20 feet.

MISSED APPROACH: Climb to 2000 direct EPOLE and hold.

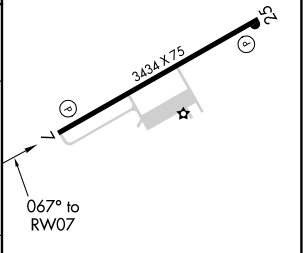
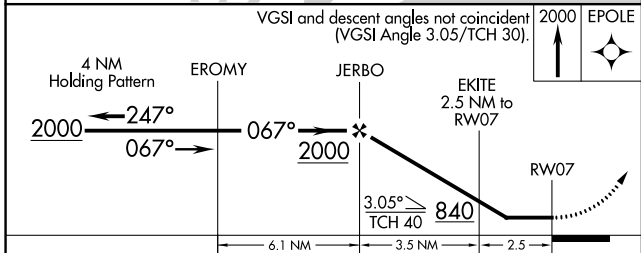
AWOS-3 119.675	BEAUFORT APP CON* 125.125 292.125	CLNC DEL 121.725	UNICOM 122.7 (CTAF) 0
--------------------------	---	----------------------------	---------------------------------



Procedure NA for arrivals at SAV VORTAC on V437 southwest bound.

RADAR required for arrivals at LEFKO.

ELEV	9	TDZE	9
------	---	------	---



CATEGORY	A	B	C	D
LNVA MDA	380-1	371 (400-1)		NA
CIRCLING	480-1	471 (500-1)	640-1 3/4 631 (700-1 3/4)	NA

REIL Rwy 25
 MIRL Rwy 7-25 0

SE-2, 26 DEC 2024 to 23 JAN 2025

SE-2, 26 DEC 2024 to 23 JAN 2025