

(CSHEL7.CSHEL) 24305

AL-6757 (FAA)

SOUTHWEST FLORIDA INTL (RSW)

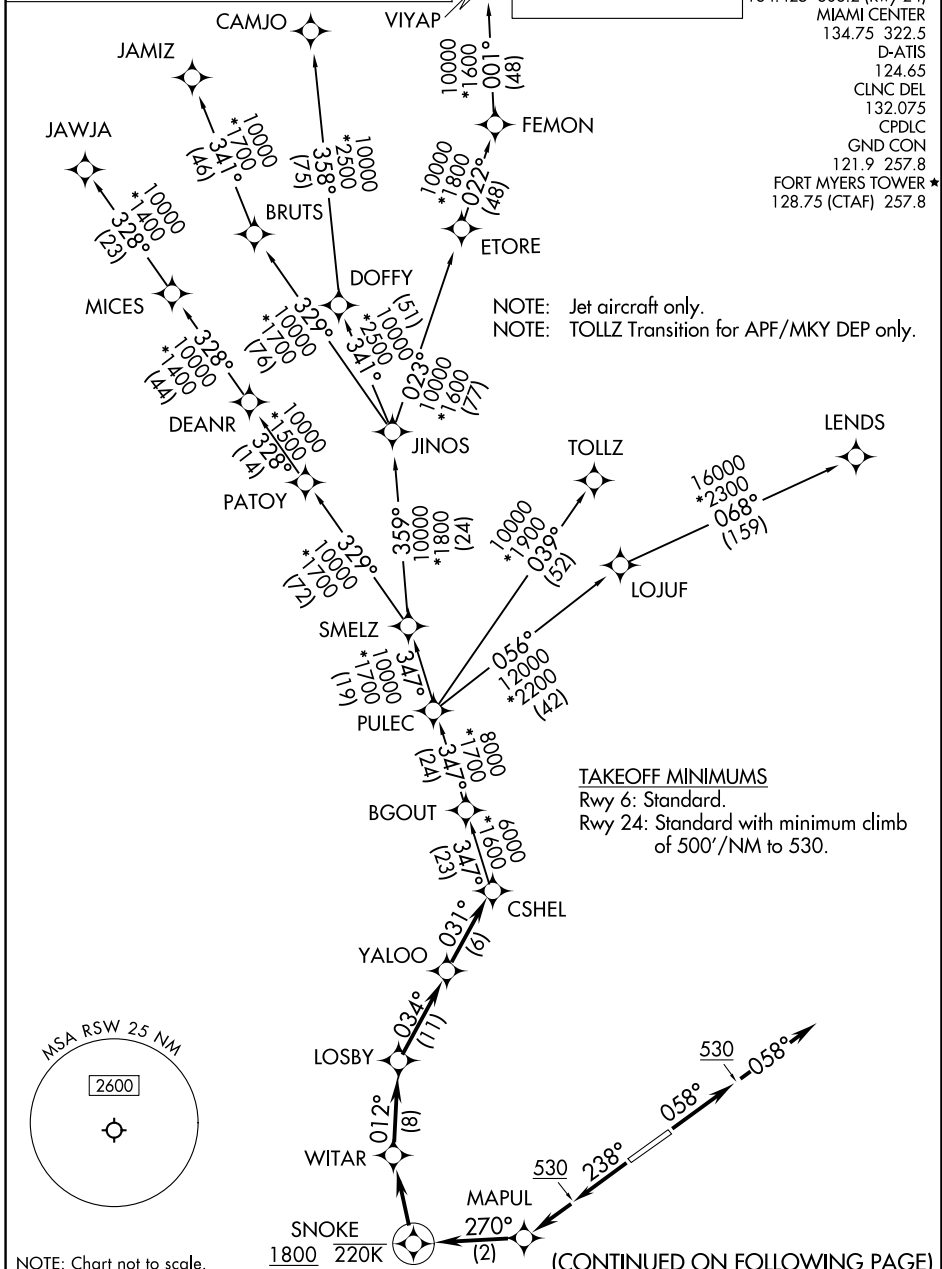
CSHEL SEVEN DEPARTURE (RNAV)

FORT MYERS, FLORIDA

RNAV 1 - DME/DME/IRU or GPS.
RADAR required for non-GPS equipped aircraft.

TOP ALTITUDE:
4000

FORT MYERS DEP CON*
 126.8 306.2 (Rwy 6)
 134.425 306.2 (Rwy 24)
 MIAMI CENTER
 134.75 322.5
 D-ATIS
 124.65
 CLNC DEL
 132.075
 CPDLC
 GND CON
 121.9 257.8
 FORT MYERS TOWER*
 128.75 (CTAF) 257.8



SE-3, 26 DEC 2024 to 23 JAN 2025

SE-3, 26 DEC 2024 to 23 JAN 2025

CSHEL SEVEN DEPARTURE (RNAV)

FORT MYERS, FLORIDA

(CSHEL7.CSHEL) 31OCT24

SOUTHWEST FLORIDA INTL (RSW)

CSHEL SEVEN DEPARTURE (RNAV)



DEPARTURE ROUTE DESCRIPTION

TAKEOFF RUNWAY 6: Climb on heading 058° to 530, then on heading 058° for RADAR vectors to CSHEL, thence...

TAKEOFF RUNWAY 24: Climb on heading 238° to 530, then continue climb direct MAPUL, then on track 270° to cross SNOKE at or above 1800 and at or below 220K, then right turn direct WITAR, then on track 012° to LOSBY, then on track 034° to YALOO, then on track 031° to CSHEL, thence...

...on assigned transition. Maintain 4000. Expect clearance to filed altitude within 10 minutes after departure.

CAMJO TRANSITION (CSHEL7.CAMJO)

JAMIZ TRANSITION (CSHEL7.JAMIZ)

JAWJA TRANSITION (CSHEL7.JAWJA)

LENDZ TRANSITION (CSHEL7.LENDZ)

TOLLZ TRANSITION (CSHEL7.TOLLZ)

VIYAP TRANSITION (CSHEL7.VIYAP)

SE-3, 26 DEC 2024 to 23 JAN 2025

SE-3, 26 DEC 2024 to 23 JAN 2025