

LOC/DME I-RSW 111.5 Chan 52	APP CRS 058°	Rwy Idg 12000 TDZE 27 Apt Elev 30
---	------------------------	--

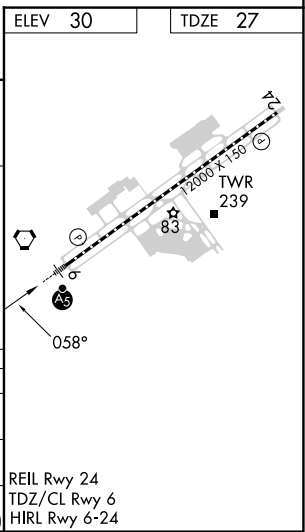
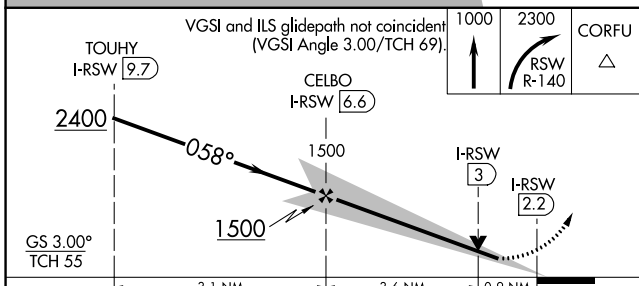
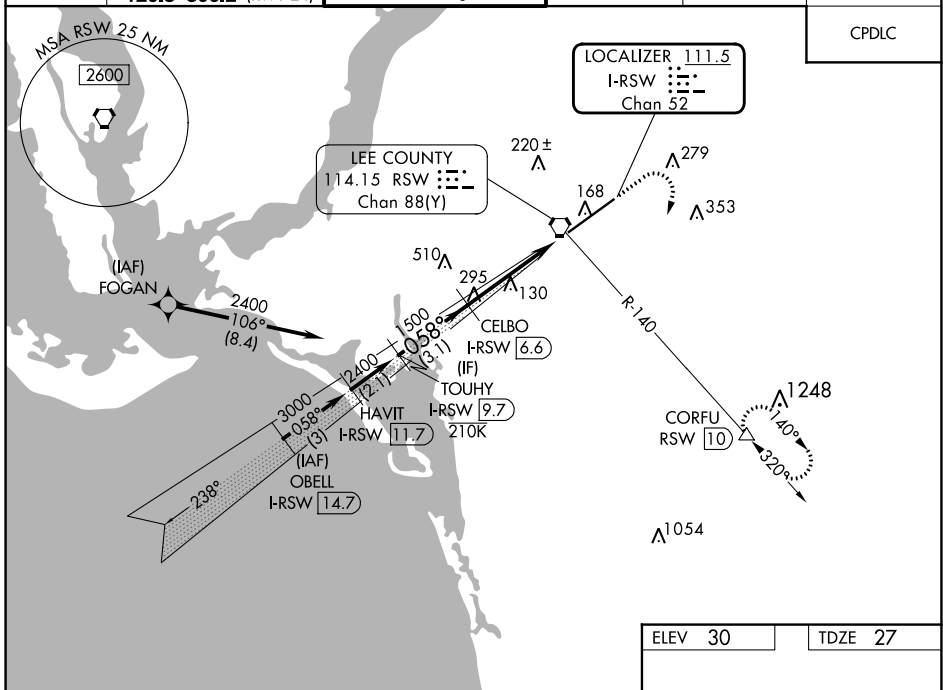
ILS or LOC RWY 6

SOUTHWEST FLORIDA INTL (RSW)

RNP APCH - GPS from FOGAN. DME required.	MALSR 	MISSED APPROACH: Climb to 1000 then climbing right turn to 2300 on RSW VORTAC R-140 to CORFU/RSW 10 DME and hold.
⚠ For inop ALS, increase S-ILS 6 Cat E visibility to RVR 4000 and S-LOC 6 Cats C/D/E to RVR 5500.		

D-ATIS 124.65	FORT MYERS APP CON ★ 125.15 306.2 (RWY 6) 126.8 306.2 (RWY 24)	FORT MYERS TOWER ★ 128.75 (CTAF) 0 257.8	GND CON 121.9 257.8	CLNC DEL 132.075	UNICOM 122.95
-------------------------	--	---	-------------------------------	----------------------------	-------------------------

CPDLC



SE-3, 26 DEC 2024 to 23 JAN 2025

SE-3, 26 DEC 2024 to 23 JAN 2025