

WAAS CH 93731 W31A	APP CRS 319°	Rwy Idg 4399 TDZE 1943 Apt Elev 1944
--	------------------------	---

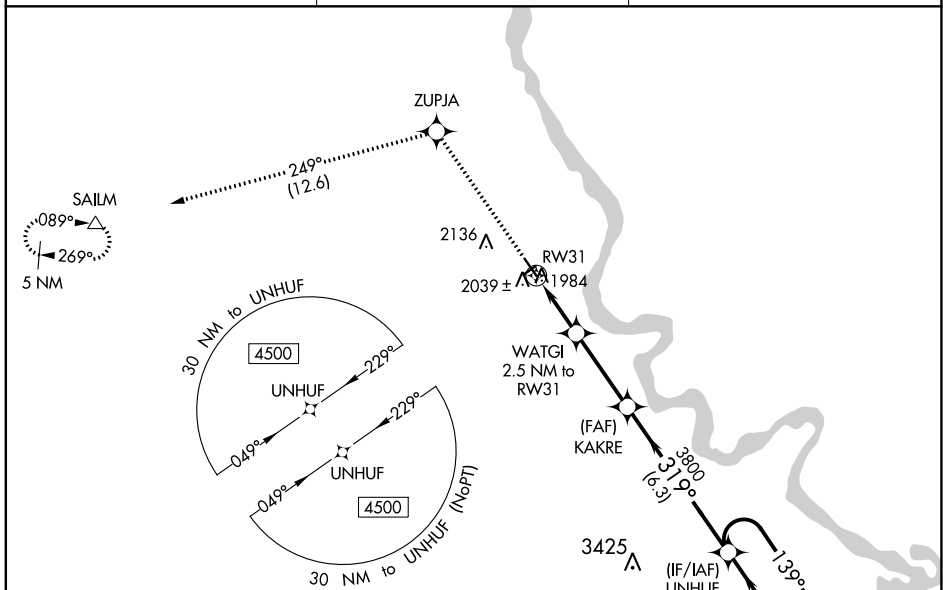
RNAV (GPS) RWY 31

MANDAN RGNL/LAWLER FLD (Y19)

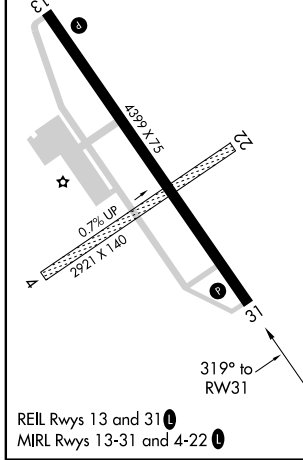
⚠ Baro-VNAV NA when using Bismarck altimeter setting. For uncompensated Baro-VNAV systems, LNAV/VNAV NA below -18°C (0°F) or above 54°C (130°F). DME/DME RNP-0.3 NA. When local altimeter setting not received, use Bismarck altimeter setting and increase all DA 54 feet and LNAV/VNAV all Cats visibility 1/8 mile, increase all MDA 60 feet and LNAV Cat C/D visibility 1/8 mile and Circling Cat D 1/4 mile. Helicopter visibility reduction below 3/4 SM NA. Circling to Rwys 4 and 22 NA.

ASR MISSED APPROACH: Climb to 4600 direct ZUPJA and on track 249° to SAILM and hold.

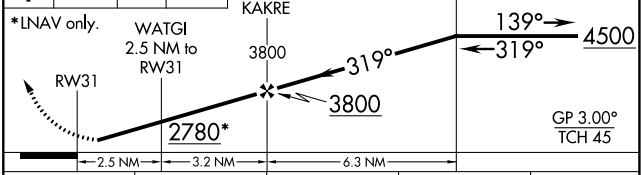
AWOS-3 118.225	BISMARCK APP CON * 126.3 298.9	UNICOM 122.8 (CTAF) 0
--------------------------	--	---------------------------------



ELEV 1944	TDZE 1943
	2059 ± ⚠



4600	ZUPJA	tr 249°	SAILM	VGSI and RNAV glidepath not coincident (VGSI Angle 3.00/TCH 25).	5 NM Holding Pattern
------	-------	---------	-------	--	----------------------



CATEGORY	A	B	C	D
LPV DA		2193-1	250 (300-1)	
LNAV/VNAV DA		2220-1	277 (300-1)	
LNAV MDA		2300-1	357 (400-1)	
C CIRCLING	2360-1 416 (500-1)	2460-1 516 (600-1)	2460-1½ 516 (600-1½)	2560-2 616 (700-2)

NC-1, 26 DEC 2024 to 23 JAN 2025

NC-1, 26 DEC 2024 to 23 JAN 2025