

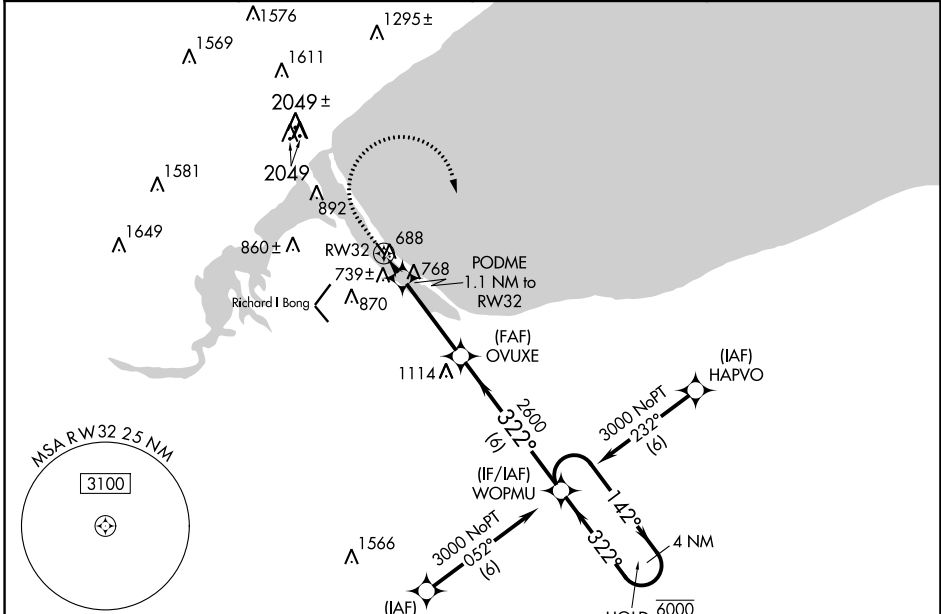
APP CRS 322°	Rwy Idg 2600
	TDZE 609
	Apt Elev 609

RNAV (GPS) RWY 32

SKY HARBOR (D'Y'T)

RNP APCH - GPS.		MISSED APPROACH: Climb to 1100 then climbing right turn to 3000 direct WOPMU and hold.	
<p>⚠ Rwy 32 helicopter visibility reduction below 1 SM NA. Circling NA to waterways 13W, 31W, 9W, 27W.</p>			

AWOS-3 119.275	DULUTH APP CON 125.45 233.7	CLNC DEL 124.8	UNICOM 122.7 (CTAF) 0
--------------------------	---------------------------------------	--------------------------	---------------------------------

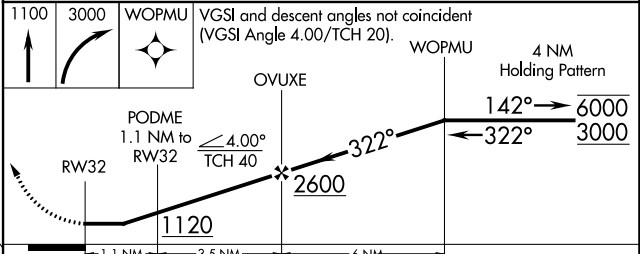
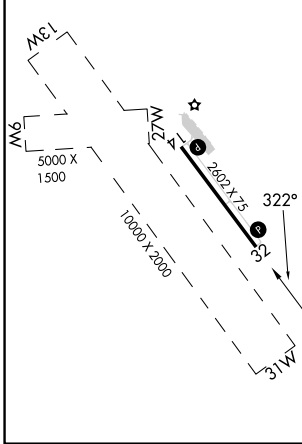


NC-1, 26 DEC 2024 to 23 JAN 2025

NC-1, 26 DEC 2024 to 23 JAN 2025

ELEV 609	D	TDZE 609
----------	----------	----------

REIL Rwy 14 and 32 **0**
MIRL Rwy 14-32 **0**



CATEGORY	A	B	C	D
LNAV MDA	1000-1	391 (400-1)	NA	
CIRCLING	1100-1 491 (500-1)	1180-1 571 (600-1)	NA	