

RNAV (GPS) RWY 35

CLAY CENTER MUNI (CYW)

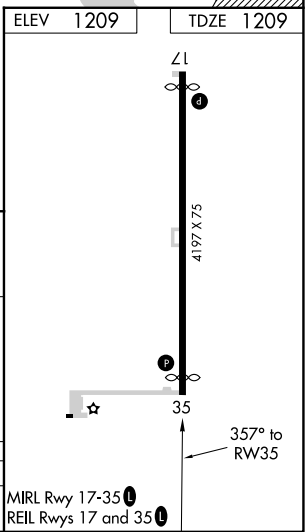
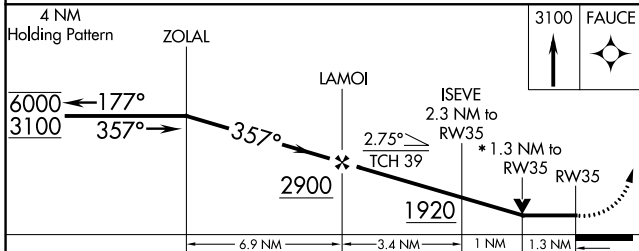
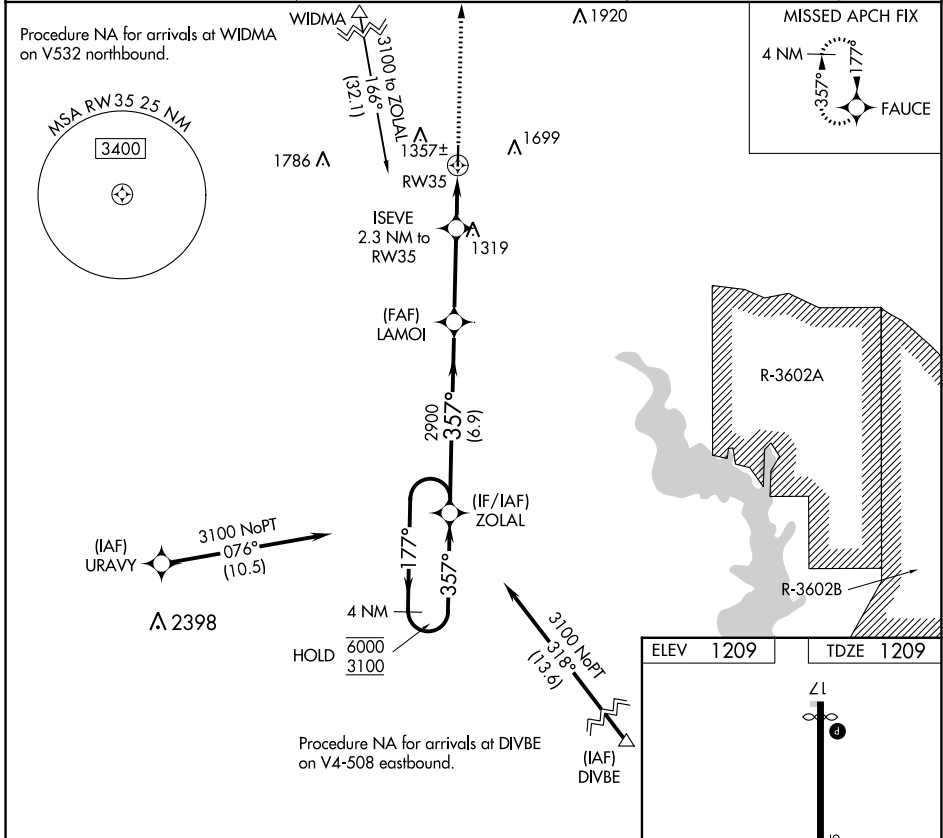
| | | |
|-------------|----------|-------------|
| APP CRS | Rwy Idg | 3970 |
| 357° | TDZE | 1209 |
| | Apt Elev | 1209 |

RNP APCH.

NA Rwy 35 helicopter visibility reduction below $\frac{3}{4}$ SM NA. VDP NA when using Salina altimeter setting. When local altimeter setting not received, use Salina altimeter setting and increase all MDA 120 feet and LNAV Cat C visibility $\frac{3}{8}$ SM.

MISSED APPROACH: Climb to 3100 direct FAUCE and hold.

| | | |
|---------------|------------------------|---------------------|
| AWOS-3T | MARSHALL AAF APP CON * | UNICOM |
| 119.95 | 121.25 254.35 | 122.8 (CTAF) |



| | | | | |
|----------|--------|-------------|---|----|
| CATEGORY | A | B | C | D |
| LNAV MDA | 1580-1 | 371 (400-1) | | NA |

NC-2, 26 DEC 2024 to 23 JAN 2025

NC-2, 26 DEC 2024 to 23 JAN 2025