

WAAS CH 50205 W12A	APP CRS 123°	Rwy Idg 5499 TDZE 241 Apt Elev 247
--	------------------------	---

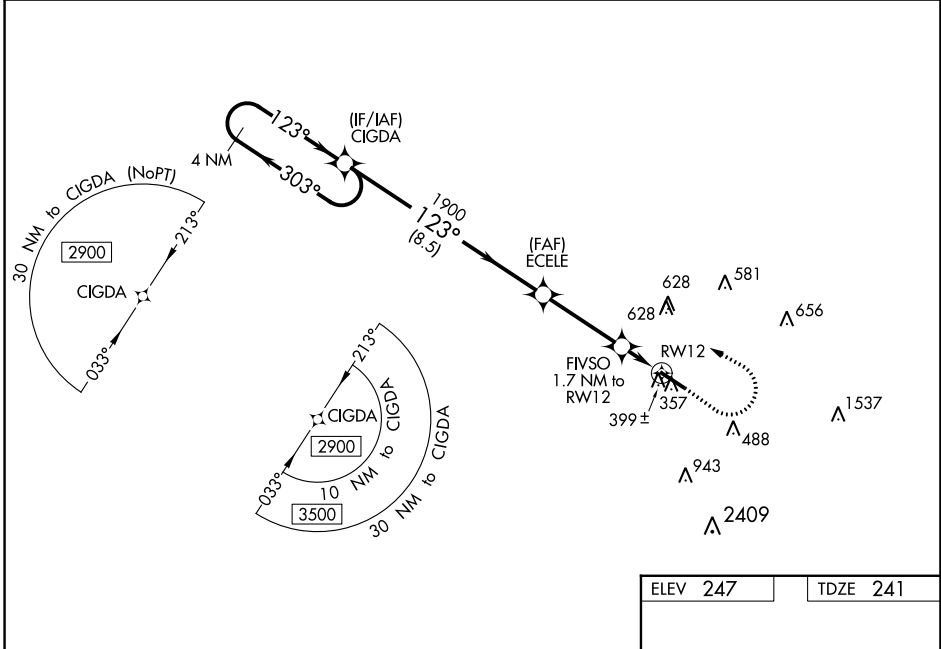
RNAV (GPS) RWY 12

JOHN BELL WILLIAMS (JVW)

⚠ For uncompensated Baro-VNAV systems, LNAV/VNAV NA below -15°C (5°F) or above 54°C (130°F). DME/DME RNP-0.3 NA. Circling NA for Cat D southwest of Rwy 12-30. Baro-VNAV and VDP NA when using Hawkins Fld altimeter setting. Helicopter visibility reduction below ¼ SM NA. When local altimeter setting not received, use Hawkins Fld altimeter setting: increase all DA 36 feet, all MDA 40 feet, all LNAV/VNAV visibilities ½ mile, LNAV Cat C and D visibilities ¼ mile, and Circling Cat C and D visibility ¼ mile.

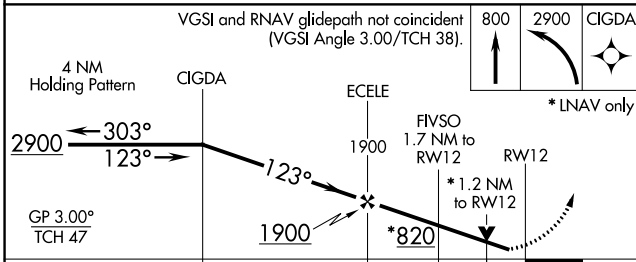
MISSED APPROACH: Climb to 800 then climbing left turn to 2900 direct CIGDA and hold.

AWOS-3PT 118.675	JACKSON APP CON* 125.25 319.2	UNICOM 123.0 (CTAF) 0
----------------------------	---	--



SC-4, 26 DEC 2024 to 23 JAN 2025

SC-4, 26 DEC 2024 to 23 JAN 2025



ELEV 247	TDZE 241
----------	----------

CATEGORY	A	B	C	D
LPV DA		441-¾	200 (200-¾)	
LNAV/VNAV DA		662-1⅜	421 (500-1⅜)	
LNAV MDA	660-1	419 (500-1)	660-1⅛	419 (500-1⅛)
C CIRCLING	800-1	553 (600-1)	980-2 733 (800-2)	980-2¼ 733 (800-2¼)

