

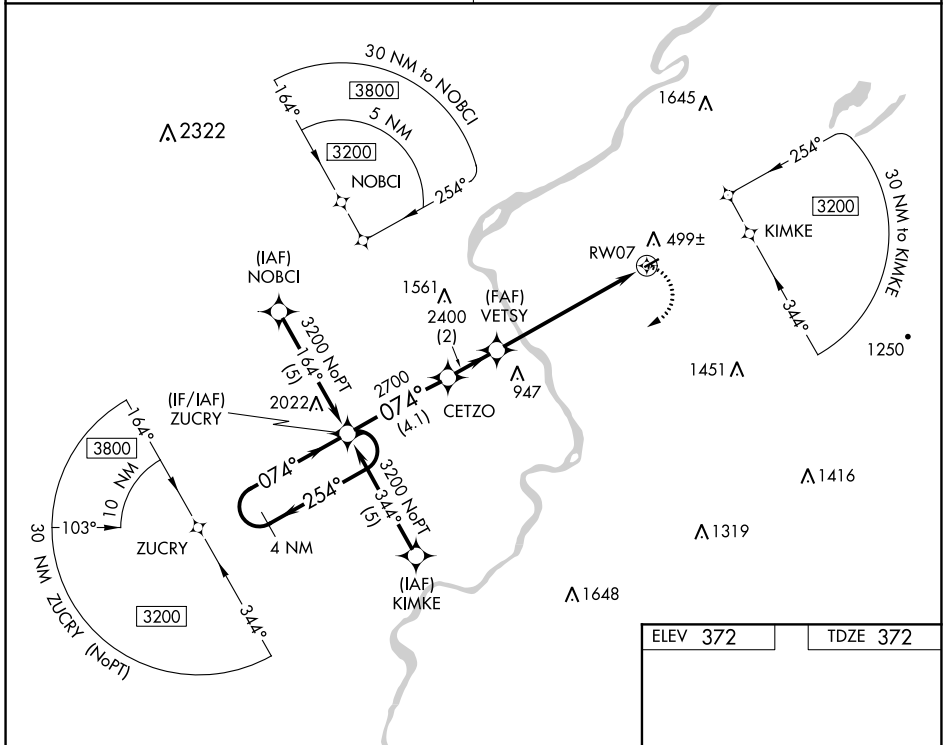
APP CRS <b>074°</b>	Rwy Idg TDZE Apt Elev	<b>2794</b> <b>372</b> <b>372</b>
------------------------	-----------------------------	---

# RNAV (GPS) RWY 7

BLAIRSTOWN (1N7)

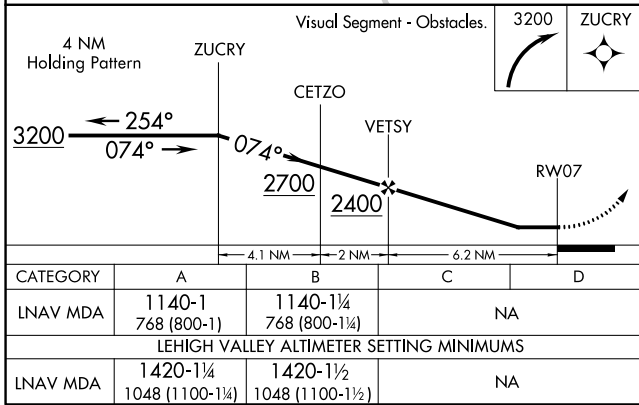
RNP APCH.	MISSED APPROACH: Climbing right turn to 3200 direct ZUCRY and hold.
▼ When local altimeter setting not received, use Lehigh Valley altimeter setting. Procedure NA at night. Rwy 7 helicopter visibility reduction below 1 SM NA.	

NEWARK APP CON <b>127.6 379.9</b>	UNICOM <b>123.0 (CTAF) 0</b>
--------------------------------------	---------------------------------



NE-2, 26 DEC 2024 to 23 JAN 2025

NE-2, 26 DEC 2024 to 23 JAN 2025



ELEV 372	TDZE 372
----------	----------

