

WAAS CH <b>63037</b> <b>W17A</b>	APP CRS <b>174°</b>	Rwy Idg TDZE Apt Elev	<b>4301</b> <b>2707</b> <b>2707</b>
--	------------------------	-----------------------------	---

# RNAV (GPS) RWY 17

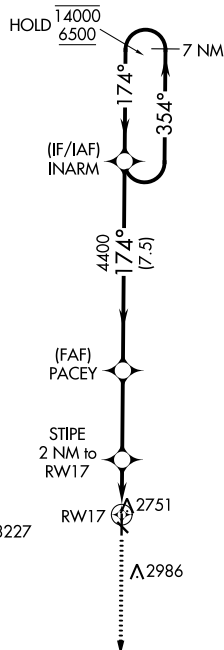
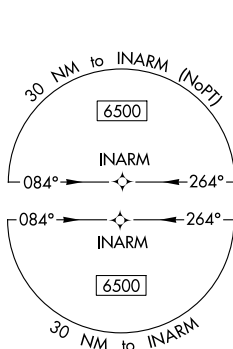
OBERLIN MUNI (OIN)

RNP APCH-GPS.

**⚠** Helicopter visibility reduction below 1 SM NA. Straight-in Rwy 17 NA at night, Circling Rwy 12, 17, 30 NA at night. For uncompensated Baro-VNAV systems, LNAV/VNAV NA below -20°C or above 54°C.

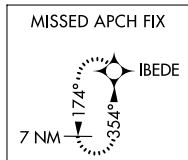
MISSED APPROACH: Climb to 6500 direct IBEDE and hold, continue climb-in-hold to 6500.

AWOS-3 <b>119.225</b>	DENVER CENTER <b>132.7 226.675</b>	UNICOM <b>122.8 (CTAF) 0</b>
--------------------------	---------------------------------------	---------------------------------

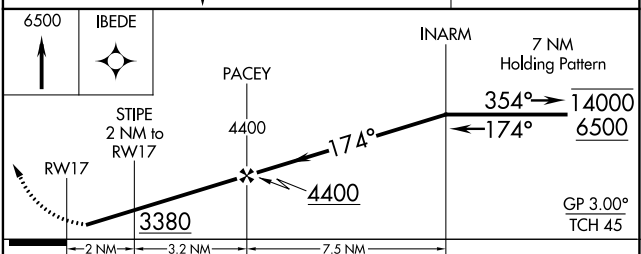
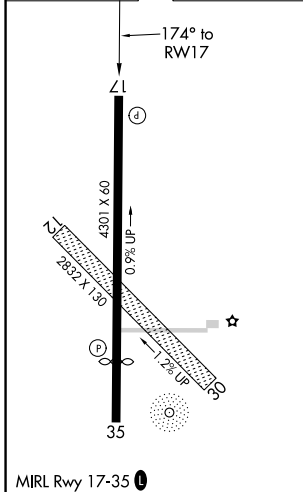


3547A

Λ 3227



ELEV 2707	<b>D</b> TDZE 2707
-----------	--------------------



CATEGORY	A	B	C	D
LPV DA	2957-1	250 (300-1)		NA
LNAV/VNAV DA	2957-1	250 (300-1)		NA
LNAV MDA	3020-1	313 (400-1)		NA
<b>C</b> CIRCLING	3160-1 453 (500-1)	3340-1 633 (700-1)	3340-1¾ 633 (700-1¾)	NA

NC-2, 26 DEC 2024 to 23 JAN 2025

NC-2, 26 DEC 2024 to 23 JAN 2025