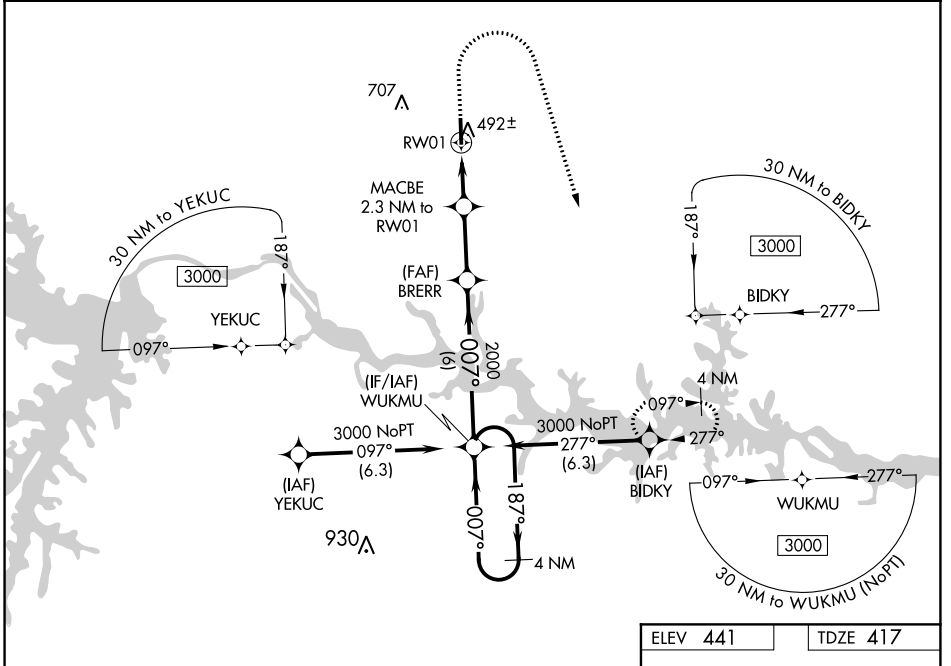


WAAS CH <b>63118</b> <b>W01A</b>	APP CRS <b>007°</b>	Rwy Idg TDZE <b>417</b> Apt Elev <b>441</b>
--	------------------------	---

# RNAV (GPS) RWY 1

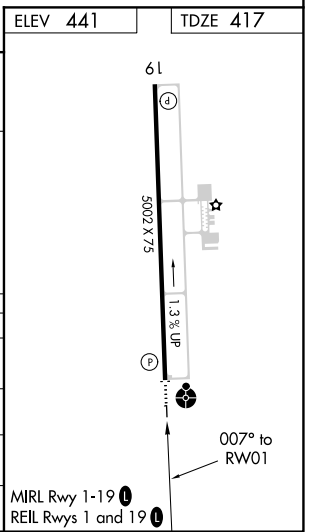
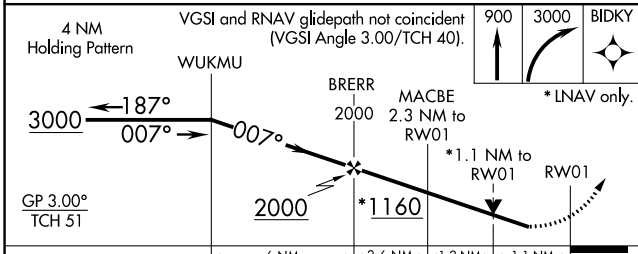
MECKLENBURG-BRUNSWICK RGNL (A/C)

<p><b>▼</b> For uncompensated Baro-VNAV systems, LNAV/VNAV NA below -15°C (5°F) or above 54°C (130°F). DME/DME RNP-0.3 NA. Rwy 1 helicopter visibility reduction below 3/4 SM NA. For inop ALS, increase LPV all visibility to 1 1/2 SM.</p>	<p>ODALS</p>	<p>MISSED APPROACH: Climb to 900 then climbing right turn to 3000 direct BIDKY and hold.</p>
<p>AWOS-3 <b>127.525</b></p>	<p>WASHINGTON CENTER <b>118.75 377.1</b></p>	<p>UNICOM <b>122.8 (CTAF) 0</b></p>



NE-3, 26 DEC 2024 to 23 JAN 2025

NE-3, 26 DEC 2024 to 23 JAN 2025



CATEGORY	A	B	C	D
LPV DA		714-1	297 (300-1)	
LNAV/VNAV DA		692-1	275 (300-1)	
LNAV MDA		760-1	343 (400-1)	
CIRCLING	860-1	900-1	1060-1 3/4	1060-2
	419 (500-1)	459 (500-1)	619 (700-1 3/4)	619 (700-2)