

APP CRS	Rwy Idg	2500
051°	TDZE	1209
	Apt Elev	1209

RNAV (GPS) RWY 4

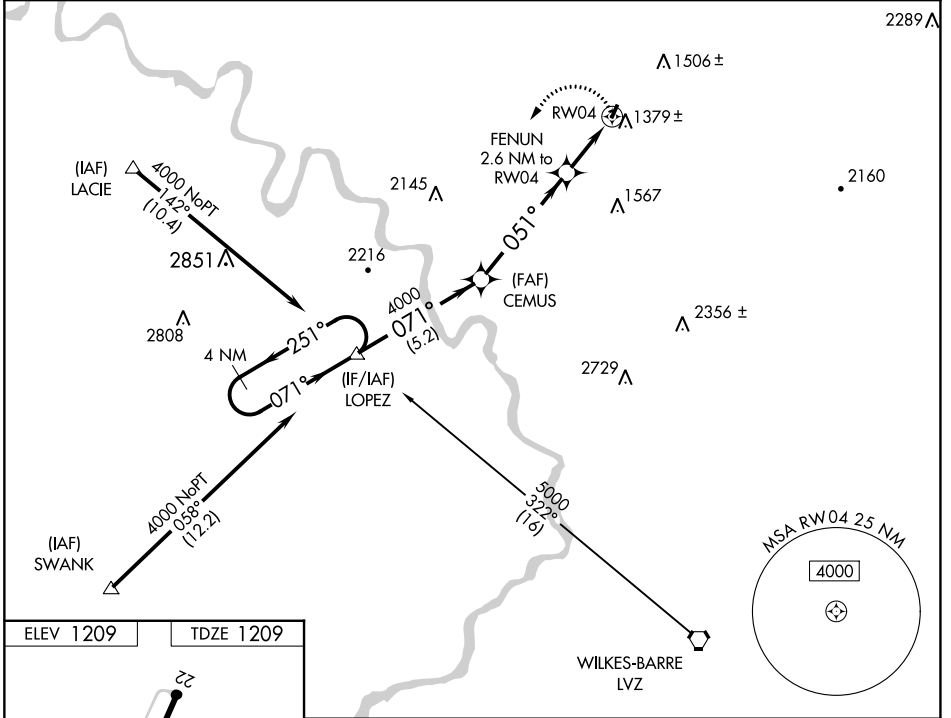
SEAMANS FLD (9N3)

▼ DME/DME RNP-0.3 NA.
▲ NA Obtain local altimeter setting on CTAF; when not received, use Wilkes-Barre/Scranton Intl altimeter setting.
 VDP NA when using Wilkes-Barre/Scranton Intl altimeter setting.

MISSED APPROACH: Climbing left turn to 4000 direct LOPEZ and hold.

WILKES-BARRE APP CON **120.95 256.7**

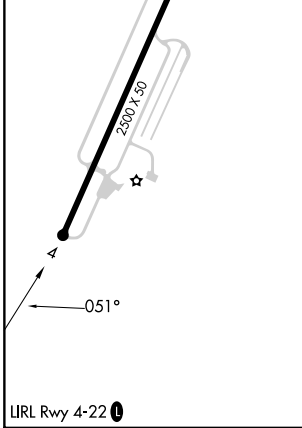
UNICOM **122.7 (CTAF) 0**



NE-4, 26 DEC 2024 to 23 JAN 2025

NE-4, 26 DEC 2024 to 23 JAN 2025

ELEV 1209	TDZE 1209
-----------	-----------



4 NM Holding Pattern	LOPEZ	CEMUS	4000	LOPEZ
	4000 ← 251° / 071° →	4000	051°	△
5.2 NM		4.9 NM	1.5 NM	1.1 NM
LOPEZ	CEMUS	FENUN 2.6 NM to RWY 04	1.1 NM to RWY 04	RWY 04
TCH 40		2180		
CATEGORY	A	B	C	D
LNAV MDA	1640-1	431 (500-1)		NA
CIRCLING	1720-1 511 (600-1)	1780-1 571 (600-1)		NA
WILKES-BARRE/SCRANTON INTL ALTIMETER SETTING MINIMUMS				
LNAV MDA	1720-1	511 (600-1)		NA
CIRCLING	1800-1 591 (600-1)	1860-1 651 (700-1)		NA