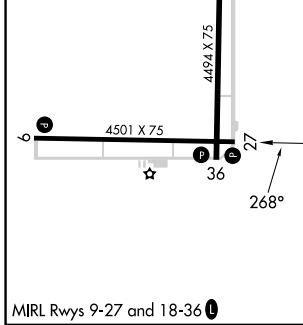
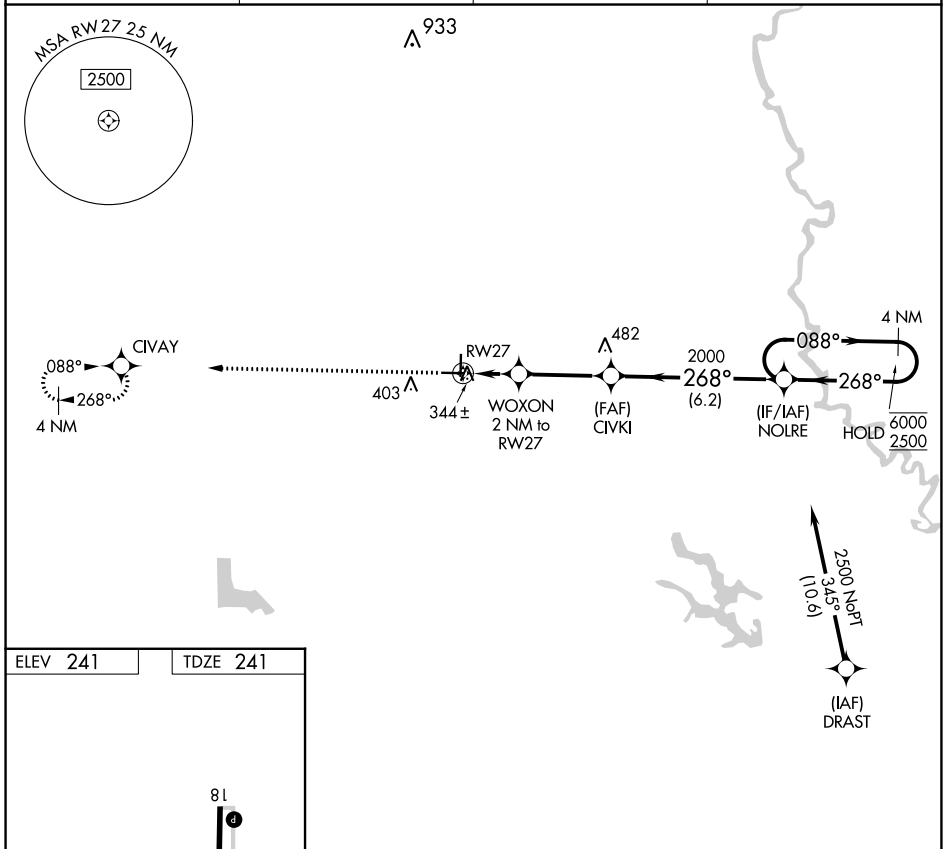


APP CRS	Rwy Idg	<b>4501</b>
<b>268°</b>	TDZE	<b>241</b>
	Apt Elev	<b>241</b>

# RNAV (GPS) RWY 27

CARLISLE MUNI (4M3)

RNP APCH-GPS.		MISSED APPROACH: Climb to 2500 direct CIVAY and hold.	
<p>▼ Procedure NA at night. Rwy 27 helicopter visibility reduction below 1 SM NA.</p> <p>▲ When local altimeter setting not received, use Stuttgart altimeter setting.</p>			
AWOS-2	LITTLE ROCK APP CON	CLNC DEL	UNICOM
<b>119.275</b>	<b>135.4 353.6</b>	<b>135.4</b>	<b>122.8 (CTAF) 1</b>



2500	CIVAY	4 NM Holding Pattern	
↑	✧	NOLRE	4 NM
		2000	6000
		920	2500
		268°	088°
		268°	268°
		2 NM	3.3 NM
		6.2 NM	
CATEGORY	A	B	C D
LNAV MDA	640-1	399 (400-1)	NA

SC-1, 26 DEC 2024 to 23 JAN 2025

SC-1, 26 DEC 2024 to 23 JAN 2025