

|             |          |             |
|-------------|----------|-------------|
| APP CRS     | Rwy Idg  | <b>2998</b> |
| <b>059°</b> | TDZE     | <b>5</b>    |
|             | Apt Elev | <b>5</b>    |

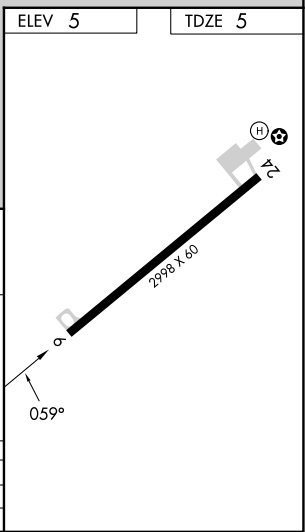
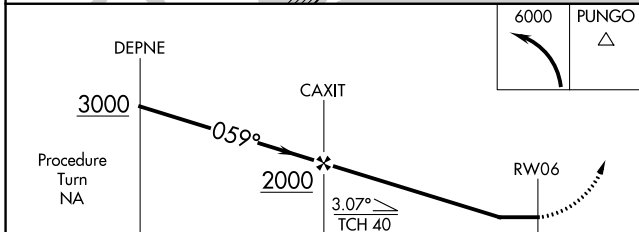
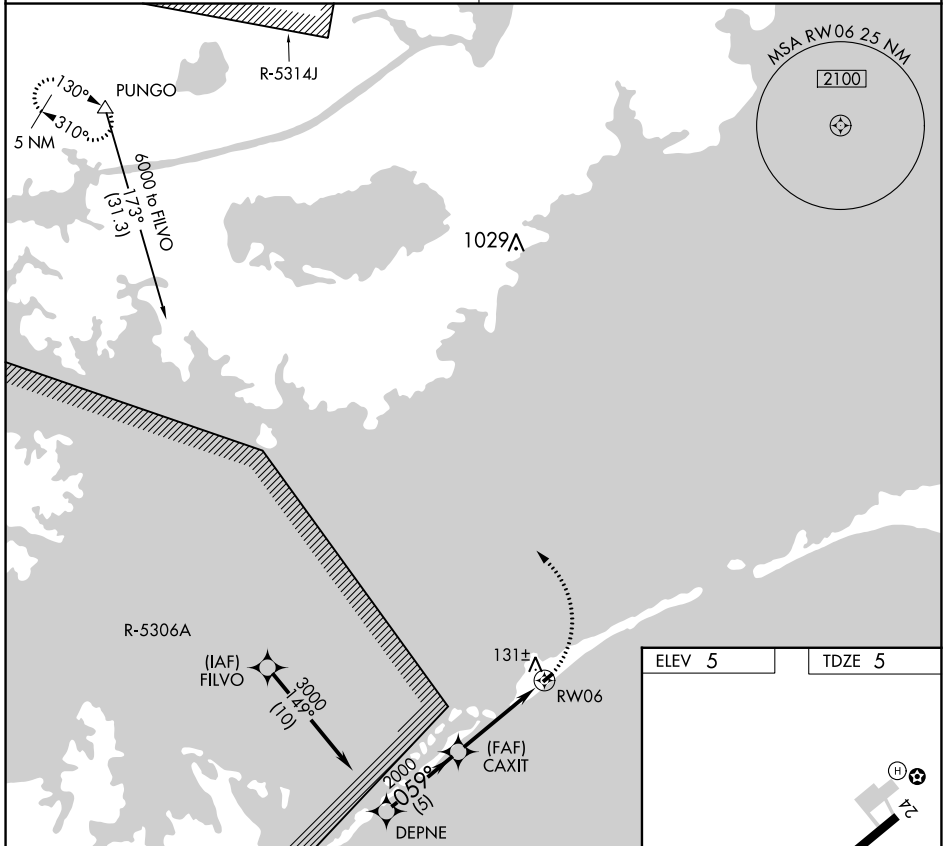
# RNAV (GPS) RWY 6

OCRACOKE ISLAND (W95)

**NA** Procedure NA at night. Use Hatters altimeter setting, when not received procedure NA. DME/DME RNP-0.3 NA. Helicopter visibility reduction below 1 SM NA.

**MISSED APPROACH:** Climbing left turn to 6000 direct PUNGO WP and hold.

|   |                      |
|---|----------------------|
| CHERRY POINT APP CON<br><b>119.75 360.775</b> | CTAF<br><b>122.9</b> |
|---|----------------------|



| CATEGORY  | A     | B           | C | D  |
|-----------|-------|-------------|---|----|
| LNNAV MDA | 500-1 | 495 (500-1) |   | NA |
| CIRCLING  | 560-1 | 555 (600-1) |   | NA |

SE-2, 26 DEC 2024 to 23 JAN 2025

SE-2, 26 DEC 2024 to 23 JAN 2025