

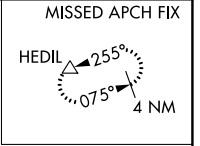
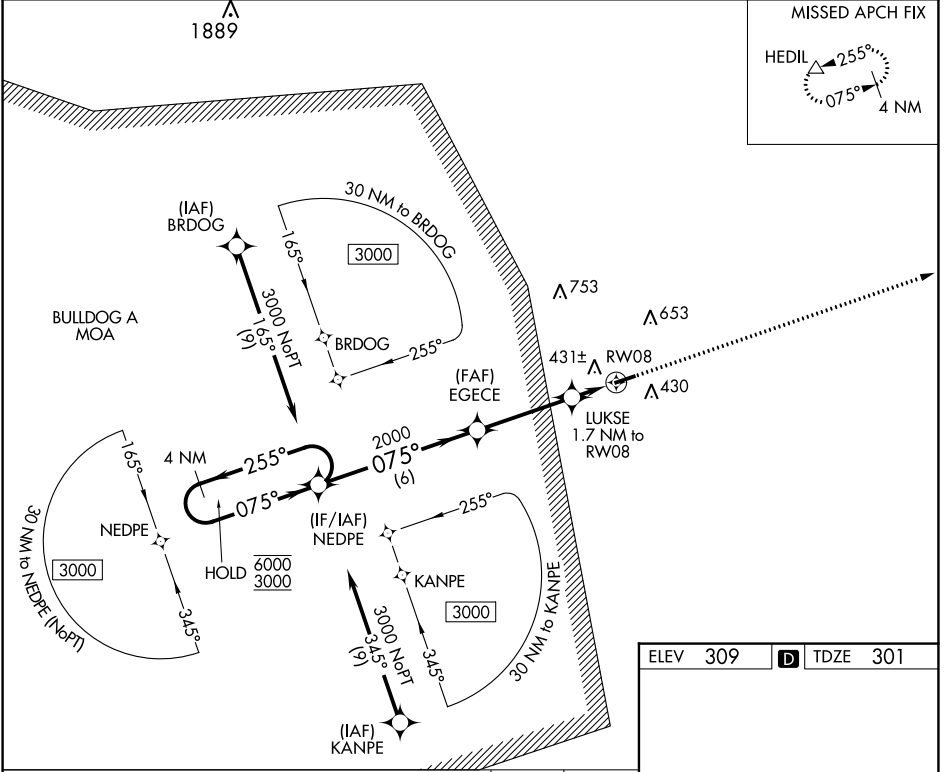
WAAS CH <b>77946</b> <b>W08A</b>	APP CRS <b>075°</b>	Rwy Idg TDZE Apt Elev	<b>5003</b> <b>301</b> <b>309</b>
--	------------------------	-----------------------------	---

# RNAV (GPS) RWY 8

BURKE COUNTY (BXXG)

RNP APCH-GPS.  
 Rwy 8 helicopter visibility reduction below 3/4 SM NA.  
 Baro-VNAV NA. Use AGS altimeter setting.  
 MISSED APPROACH: Climb to 2000 direct HEDIL and hold.

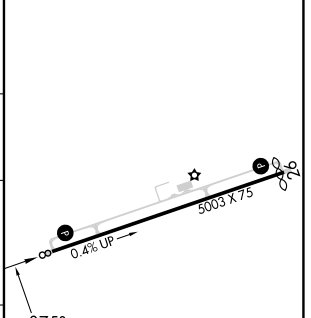
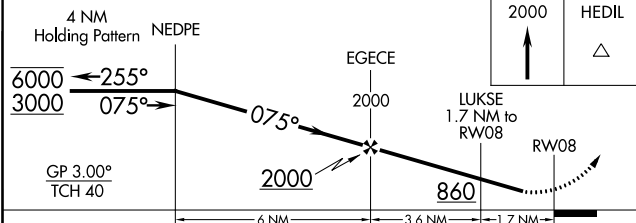
AGS ASOS <b>132.75</b>	AUGUSTA APP CON * <b>126.8 270.3</b>	CTAF <b>122.90</b>
---------------------------	---	-----------------------



SE-4, 26 DEC 2024 to 23 JAN 2025

SE-4, 26 DEC 2024 to 23 JAN 2025

ELEV 309	<b>D</b> TDZE 301
----------	-------------------



CATEGORY	A	B	C	D
LPV DA		698-1 1/8	397 (400-1 1/8)	
LNAV/VNAV DA		782-1 3/8	481 (500-1 3/8)	
LNAV MDA	760-1	459 (500-1)	760-1 3/8	459 (500-1 3/8)
CIRCLING	820-1 511 (600-1)	900-1 591 (600-1)	1080-2 1/4 771 (800-2 1/4)	1180-2 3/4 871 (900-2 3/4)

REIL Rwy 8 **D**  
 MIRL Rwy 8-26 **D**