

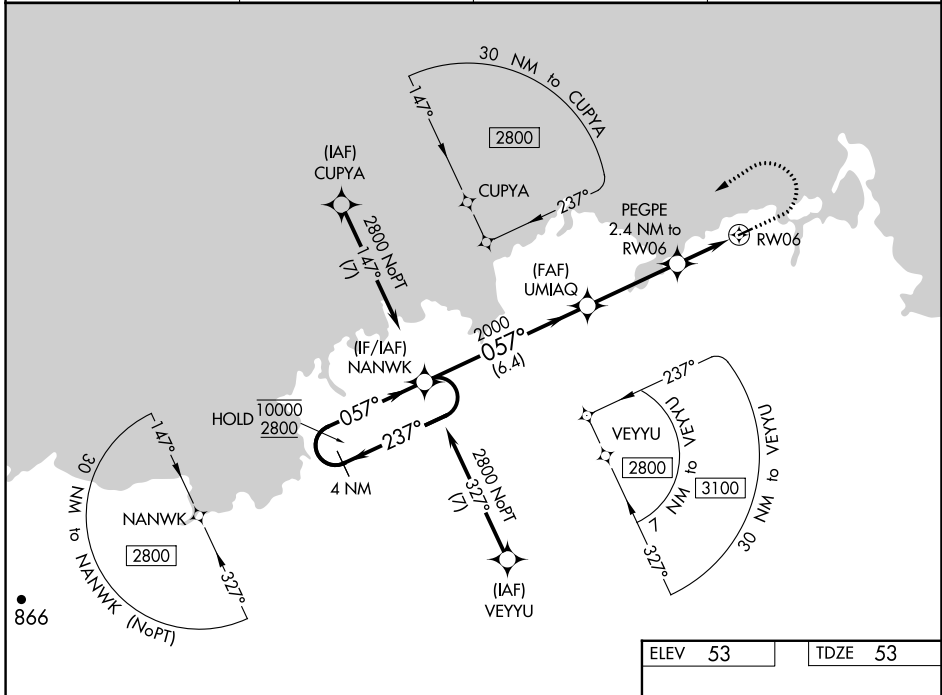
WAAS CH 78443	APP CRS 057°	Rwy Idg TDZE Apt Elev	3001 53 53
-------------------------	------------------------	-----------------------------	---------------------------------------

RNAV (GPS) RWY 6

MEKORYUK (MYU) (PAMY)

RNP APCH-GPS.		MISSED APPROACH: Climb to 700 then climbing left turn to 2800 direct NANWK and hold.	
Circling NA southeast of Rwy 6-24.			

AWOS-3P 123.9	ANCHORAGE CENTER 124.5 372.0	KENAI RADIO 122.0	CTAF 122.9 0
-------------------------	--	-----------------------------	------------------------



AK, 26 DEC 2024 to 20 FEB 2025

AK, 26 DEC 2024 to 20 FEB 2025

VGSi and RNAV glidepath not coincident (VGSi Angle 3.00/TCH 28).		700	2800	NANWK
4 NM Holding Pattern		↑	↪	✧
10000	← 237°			
2800	→ 057°			
GP 3.00°		2000	2000	
TCH 40			860	
		6.4 NM	3.6 NM	0.8 1.6 NM
CATEGORY	A	B	C	D
LPV DA		303-1	250 (300-1)	
LNAV/VNAV DA		303-1	250 (300-1)	
LNAV MDA	580-1	527 (600-1)	580-1½	527 (600-1½)
CIRCLING	580-1 527 (600-1)	640-1 587 (600-1)	660-1¾ 607 (700-1¾)	860-2½ 807 (900-2½)

