

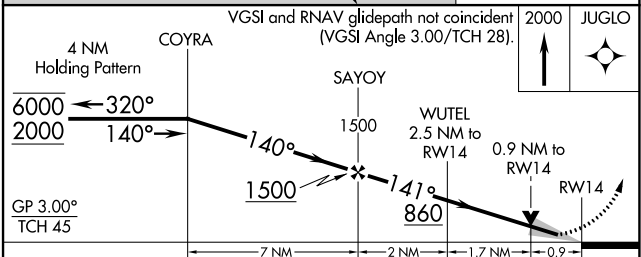
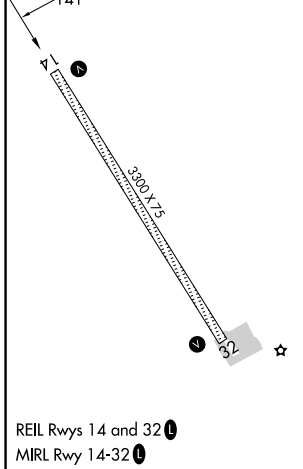
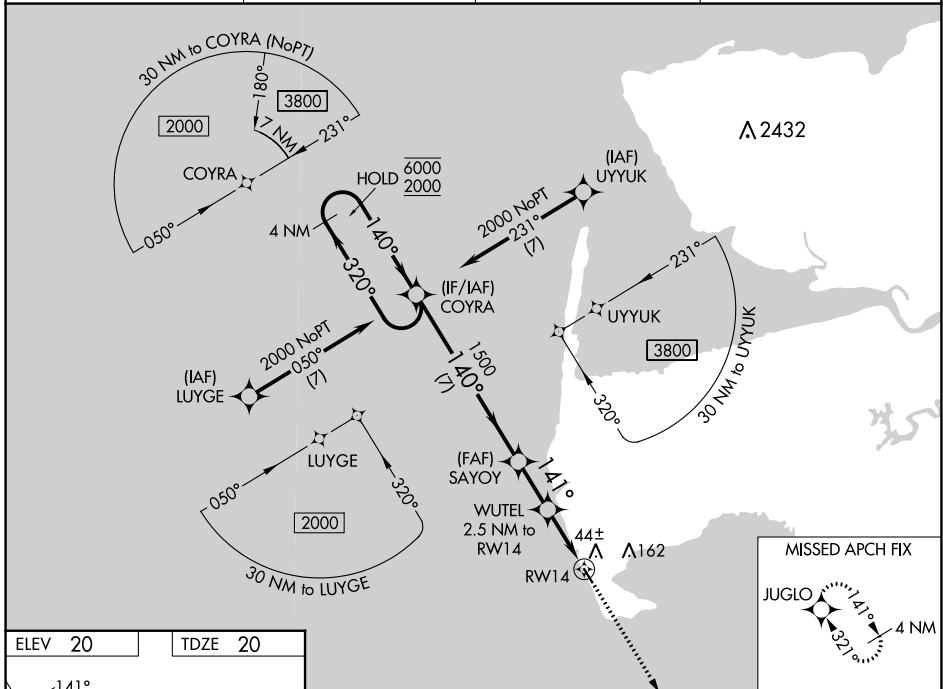
WAAS CH <b>82224</b> <b>W14A</b>	APP CRS <b>141°</b>	Rwy Idg <b>3300</b> TDZE <b>20</b> Apt Elev <b>20</b>
--	------------------------	---

# RNAV (GPS) RWY 14

HOOPER BAY (HPB) (PAHP)

RNP APCH - GPS.	MISSED APPROACH: Climb to 2000 direct JUGLO and hold.
Circling Rwy 32 NA at night. For uncompensated Baro-VNAV systems, LNAV/VNAV NA below -19°C or above 54°C.	

AWOS-3P <b>135.1</b>	ANCHORAGE CENTER <b>124.5</b>	KENAI RADIO <b>122.4</b>	CTAF <b>123.0</b>
-------------------------	----------------------------------	-----------------------------	----------------------



CATEGORY	A	B	C	D
LPV DA		220-1	200 (200-1)	
LNAV/VNAV DA		270-1	250 (300-1)	
LNAV MDA		300-1	280 (300-1)	
CIRCLING	400-1 380 (400-1)	480-1 460 (500-1)	480-1½ 460 (500-1½)	580-2 560 (600-2)

AK, 26 DEC 2024 to 20 FEB 2025

AK, 26 DEC 2024 to 20 FEB 2025