

VOR/DME HPB <b>115.2</b> Chan <b>99</b>	APP CRS <b>313°</b>	Rwy ldg TDZE <b>20</b> Apt Elev <b>20</b>	<b>3300</b>
---	------------------------	---	-------------

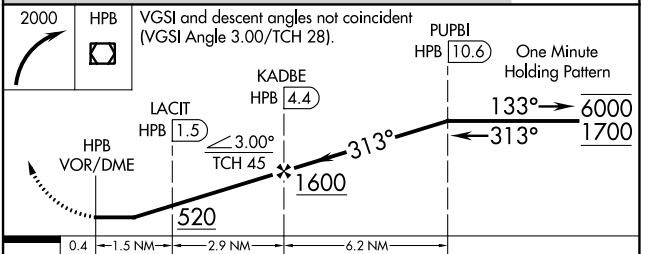
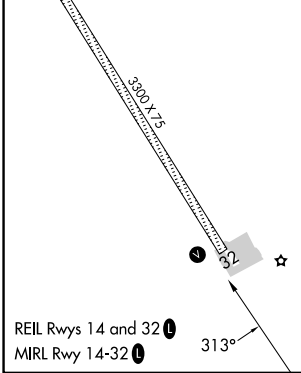
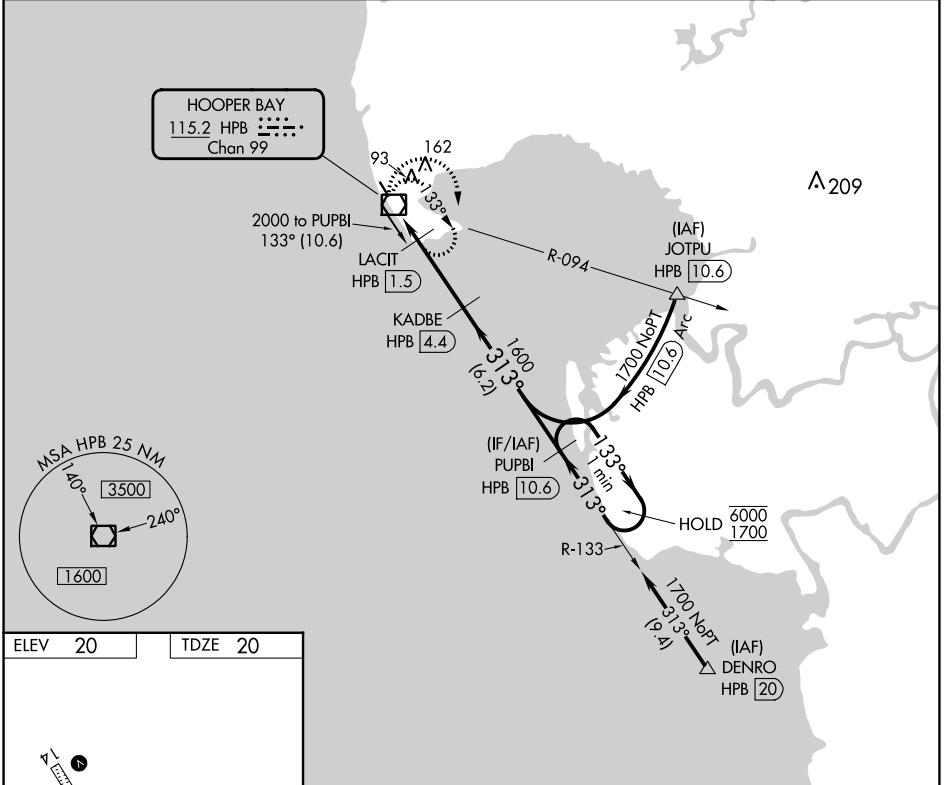
**VOR RWY 32**  
HOOPER BAY (HPB) (PAHP)

DME required.

**▼** Rwy 32 helicopter visibility reduction below 1 SM NA.  
**▲** Straight-in Rwy 32 NA at night, Circling Rwy 32 NA at night.

MISSED APPROACH: Climbing right turn to 2000 in HPB VOR/DME holding pattern.

AWOS-3P <b>135.1</b>	ANCHORAGE CENTER <b>124.5</b>	KENAI RADIO <b>122.4</b>	CTAF <b>123.0</b>
-------------------------	----------------------------------	-----------------------------	----------------------



CATEGORY	A	B	C	D
S-32	420-1	400 (400-1)	420-1½	400 (400-1½)
<b>☑</b> CIRCLING	420-1 400 (400-1)	480-1 460 (500-1)	480-1½ 460 (500-1½)	580-2 560 (600-2)

AK, 26 DEC 2024 to 20 FEB 2025

AK, 26 DEC 2024 to 20 FEB 2025