

APP CRS
240°

Rwy Idg **3301**
 TDZE **1213**
 Apt Elev **1215**

RNAV (GPS) RWY 24

MARSHALL COUNTY (MPG)

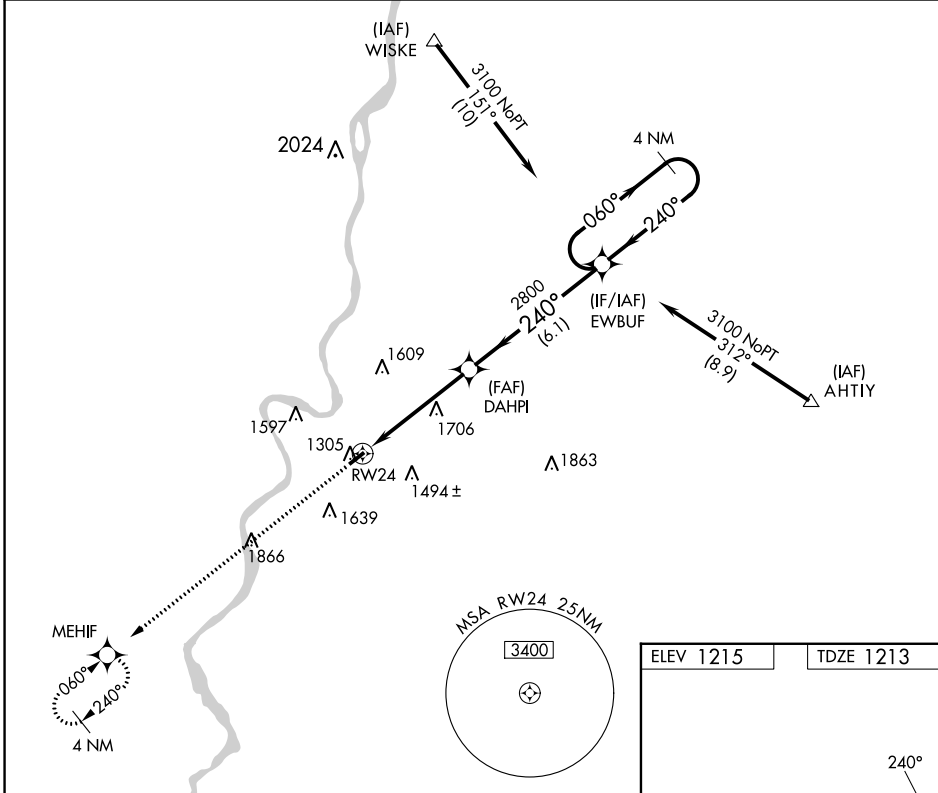
RNP APCH.

▽ When local altimeter setting not received, use Wheeling altimeter setting and increase all MDA 60 feet. Rwy 24 helicopter visibility reduction below 3/4 SM NA.

△ NA

MISSED APPROACH: Climb to 3000 direct MEHIF and hold.

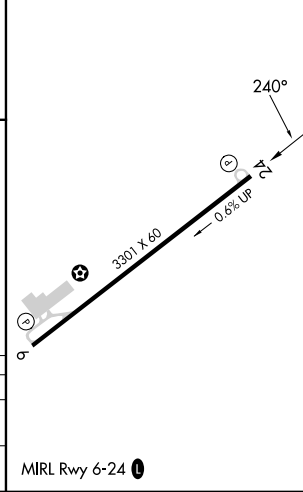
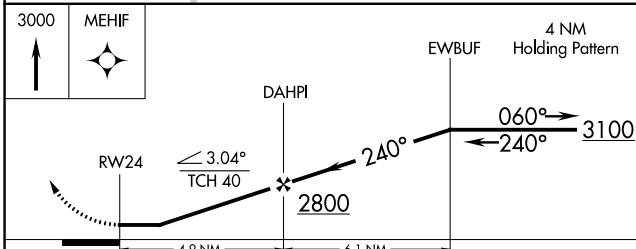
AWOS-3 119.05	CLEVELAND CENTER 126.95 239.30	UNICOM 122.7 (CTAF) 0
-------------------------	--	---------------------------------



NE-4, 26 DEC 2024 to 23 JAN 2025

NE-4, 26 DEC 2024 to 23 JAN 2025

ELEV 1215	TDZE 1213
-----------	-----------



CATEGORY	A	B	C	D
LNVA MDA	1960-1 747 (800-1)	1960-1½ 747 (800-1½)	1960-2¼ 747 (800-2¼)	NA
CIRCLING	1960-1 745 (800-1)	1960-1½ 745 (800-1½)	1960-2¼ 745 (800-2¼)	NA

MIRL Rwy 6-24 0