

APP CRS	Rwy Idg	3301
060°	TDZE	1215
	Apt Elev	1215

RNAV (GPS) RWY 6

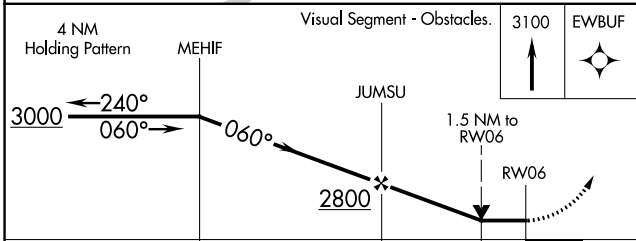
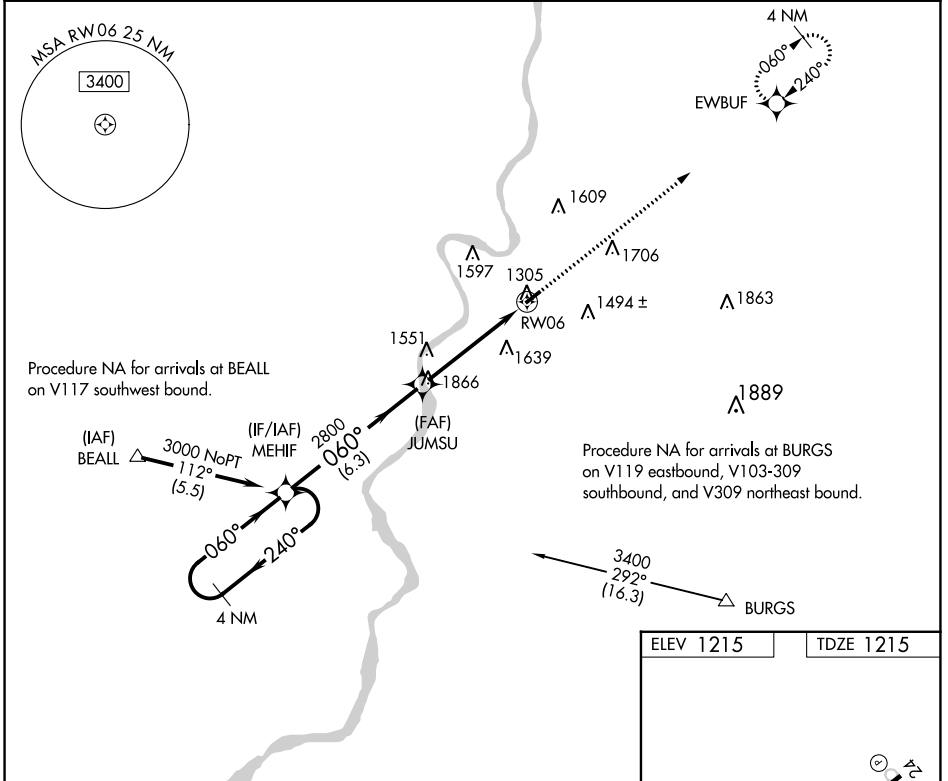
MARSHALL COUNTY (MPG)

RNP APCH.

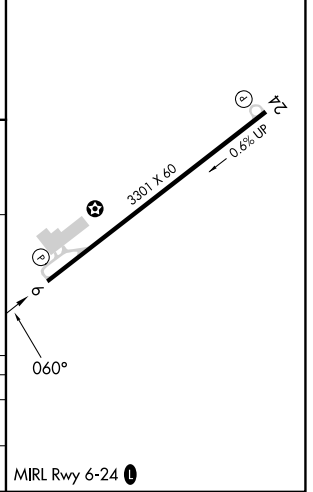
▼ Rwy 6 helicopter visibility reduction below 3/4 SM NA. VDP NA when using Wheeling altimeter setting. When local altimeter setting not received, use Wheeling altimeter setting: increase all MDA 60 feet and visibility LNAV Cat C 1/2 SM and Circling Cat C 1/4 SM.

▲ NA MISSED APPROACH: Climb to 3100 direct EWBUF and hold.

AWOS-3 119.05	CLEVELAND CENTER 126.95 239.30	UNICOM 122.7 (CTAF) ①
-------------------------	--	---------------------------------



ELEV 1215	TDZE 1215
-----------	-----------



CATEGORY	A	B	C	D
LNAV MDA	1860-1	645 (700-1)	1860-1 7/8 645 (700-1 7/8)	NA
CIRCLING	1860-1	645 (700-1)	1940-2 725 (800-2)	NA

NE-4, 26 DEC 2024 to 23 JAN 2025

NE-4, 26 DEC 2024 to 23 JAN 2025