

| | | |
|--|------------------------|---|
| WAAS CH 86301 W17A | APP CRS 169° | Rwy Idg 5898 TDZE 1665 Apt Elev 1670 |
|--|------------------------|---|

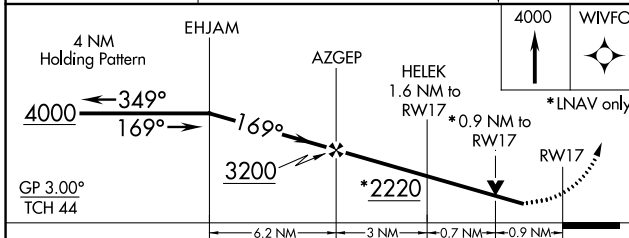
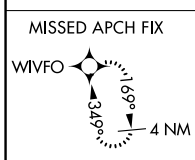
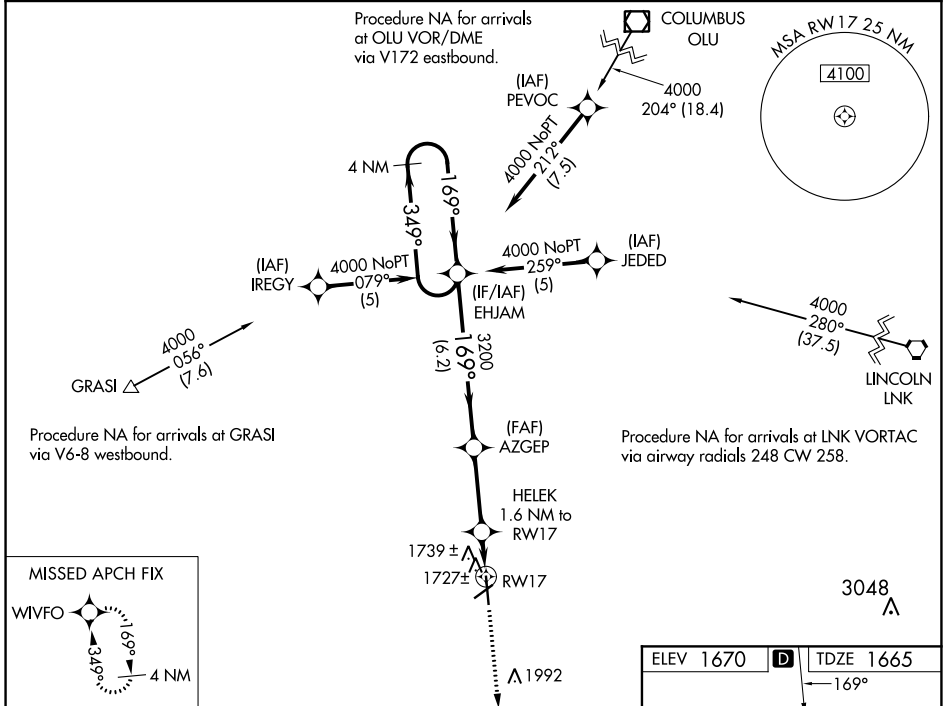
RNAV (GPS) RWY 17

YORK MUNI (JYR)

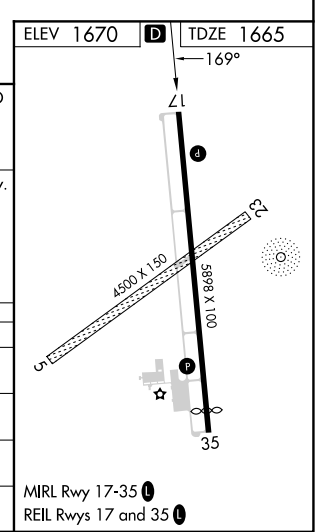
⚠ For uncompensated Baro-VNAV systems, LNAV/VNAV NA below -18°C (0°F) or above 54°C (130°F). DME/DME RNP-0.3 NA. Visibility reduction by helicopters NA. When local altimeter setting not received, use Aurora altimeter setting and increase all DA/MDA 60 feet and all LPV and LNAV/VNAV visibility ¼ mile. VDP and Baro-VNAV NA when using Aurora altimeter setting.

MISSED APPROACH:
Climb to 4000 direct WIVFO and hold.

| | | |
|--------------------------|--|---------------------------------|
| AWOS-3 124.175 | MINNEAPOLIS CENTER 119.4 278.8 | UNICOM 122.8 (CTAF) Ⓛ |
|--------------------------|--|---------------------------------|



| CATEGORY | A | B | C | D |
|--------------|-----------------------|-----------------------|-------------------------|----|
| LPV DA | 1915-¾ | 250 (300-¾) | | NA |
| LNAV/VNAV DA | 2031-1¼ | 366 (400-1¼) | | NA |
| LNAV MDA | 2000-1 | 335 (400-1) | | NA |
| CIRCLING | 2060-1 390 (400-1) | 2180-1 510 (600-1) | 2200-1½ 530 (600-1½) | NA |



NC-2, 26 DEC 2024 to 23 JAN 2025

NC-2, 26 DEC 2024 to 23 JAN 2025