

| | | |
|--|------------------------|---|
| WAAS CH 49113 W35A | APP CRS 349° | Rwy ldg 5498 TDZE 1670 Apt Elev 1670 |
|--|------------------------|---|

RNAV (GPS) RWY 35

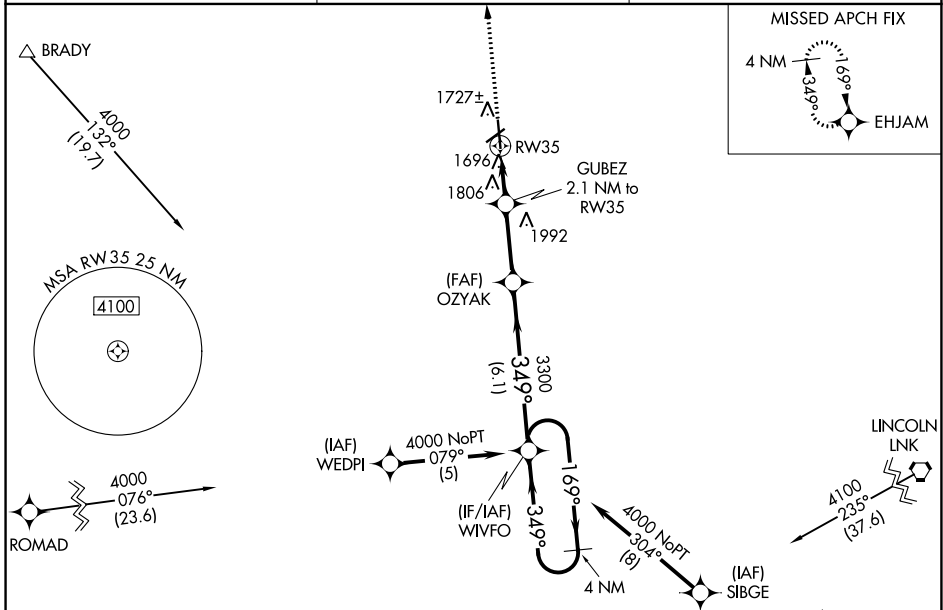
YORK MUNI (JYR)

RNP APCH.

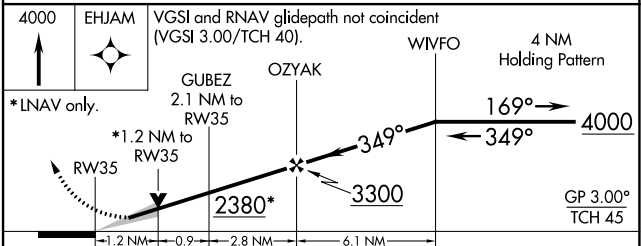
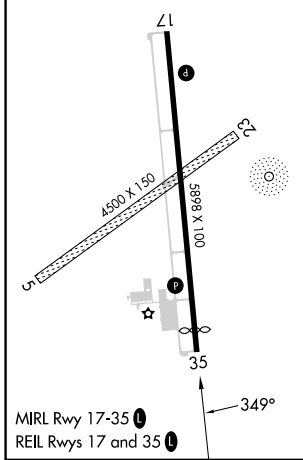
⚠ For uncompensated Baro-VNAV systems, LNAV/VNAV NA below -18°C or above 54°C.
⚠ When local altimeter setting not received, use Aurora altimeter setting and increase all DA/MDA 60 feet and all LPV, all LNAV/VNAV, and Cat C LNAV visibility ¼ mile.
 VDP and Baro-VNAV NA when using Aurora altimeter setting.

MISSED APPROACH:
 Climb to 4000 direct
 EHJAM and hold.

| | | |
|--------------------------|--|--|
| AWOS-3 124.175 | MINNEAPOLIS CENTER 119.4 278.8 | UNICOM 122.8 (CTAF) 📶 |
|--------------------------|--|--|



| | | |
|-----------|----------|-----------|
| ELEV 1670 | D | TDZE 1670 |
|-----------|----------|-----------|



| CATEGORY | A | B | C | D |
|--------------|-----------------------|-----------------------|-------------------------------|----|
| LPV DA | 1920-3/4 | 250 (300-3/4) | | NA |
| LNAV/VNAV DA | 2004-1 1/4 | 334 (400-1 1/4) | | NA |
| LNAV MDA | 2060-1 | 390 (400-1) | | NA |
| CIRCLING | 2060-1 390 (400-1) | 2180-1 510 (600-1) | 2200-1 1/2 530 (600-1 1/2) | NA |

NC-2, 26 DEC 2024 to 23 JAN 2025

NC-2, 26 DEC 2024 to 23 JAN 2025