

WAAS CH 42933 W20A	APP CRS 198°	Rwy Idg 4150 TDZE 874 Apt Elev 878
--	------------------------	---

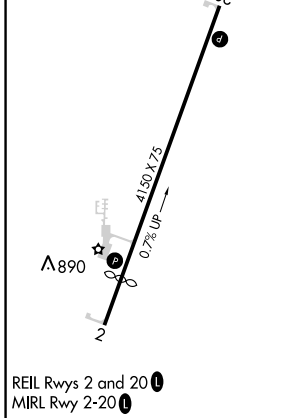
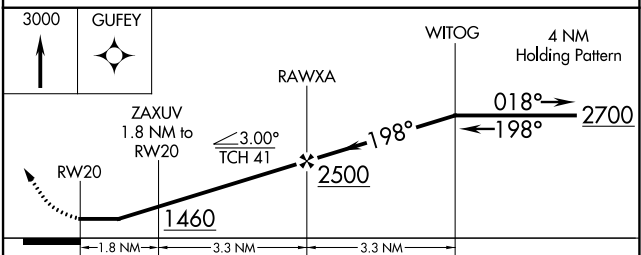
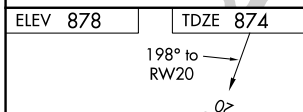
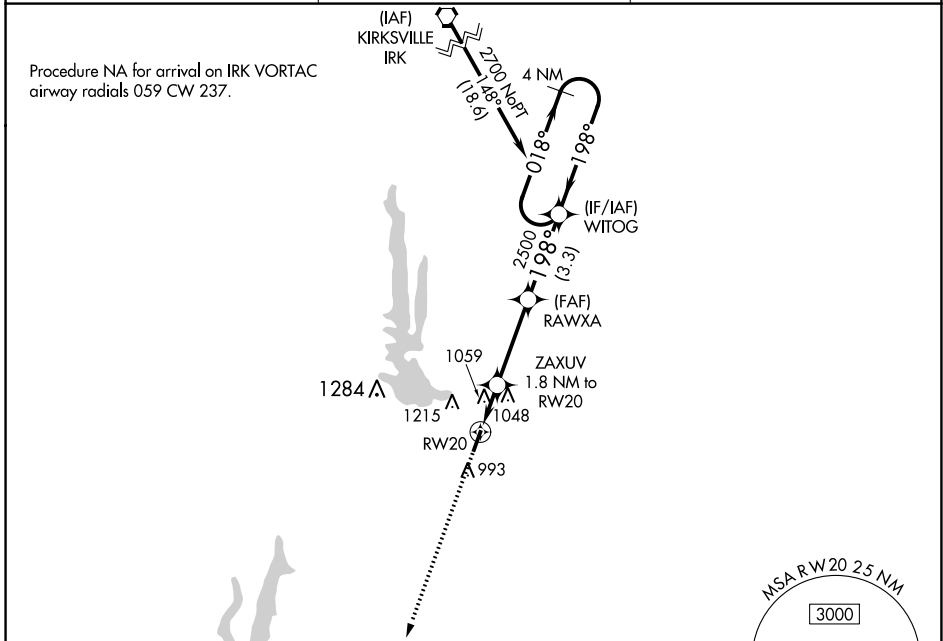
RNAV (GPS) RWY 20

MACON-FOWER MEML (K89)

NA DME/DME RNP-0.3 NA. Use Moberly altimeter setting; when not received, use Columbia altimeter setting and increase all MDA 100 feet. Helicopter visibility reduction below 1 SM NA. Night landing: Rwy 20 NA.

MISSED APPROACH: Climb to 3000 direct GUFY and hold.

MBY AWOS-3PT 120.025	KANSAS CITY CENTER 125.25 235.975	UNICOM 122.8 (CTAF)
--------------------------------	---	-------------------------------



CATEGORY	A	B	C	D
LP MDA	1340-1	466 (500-1)	NA	
LNAV MDA	1360-1	486 (500-1)	NA	
C CIRCLING	1400-1 522 (600-1)	1560-1 682 (700-1)	NA	

NC-3, 26 DEC 2024 to 23 JAN 2025

NC-3, 26 DEC 2024 to 23 JAN 2025