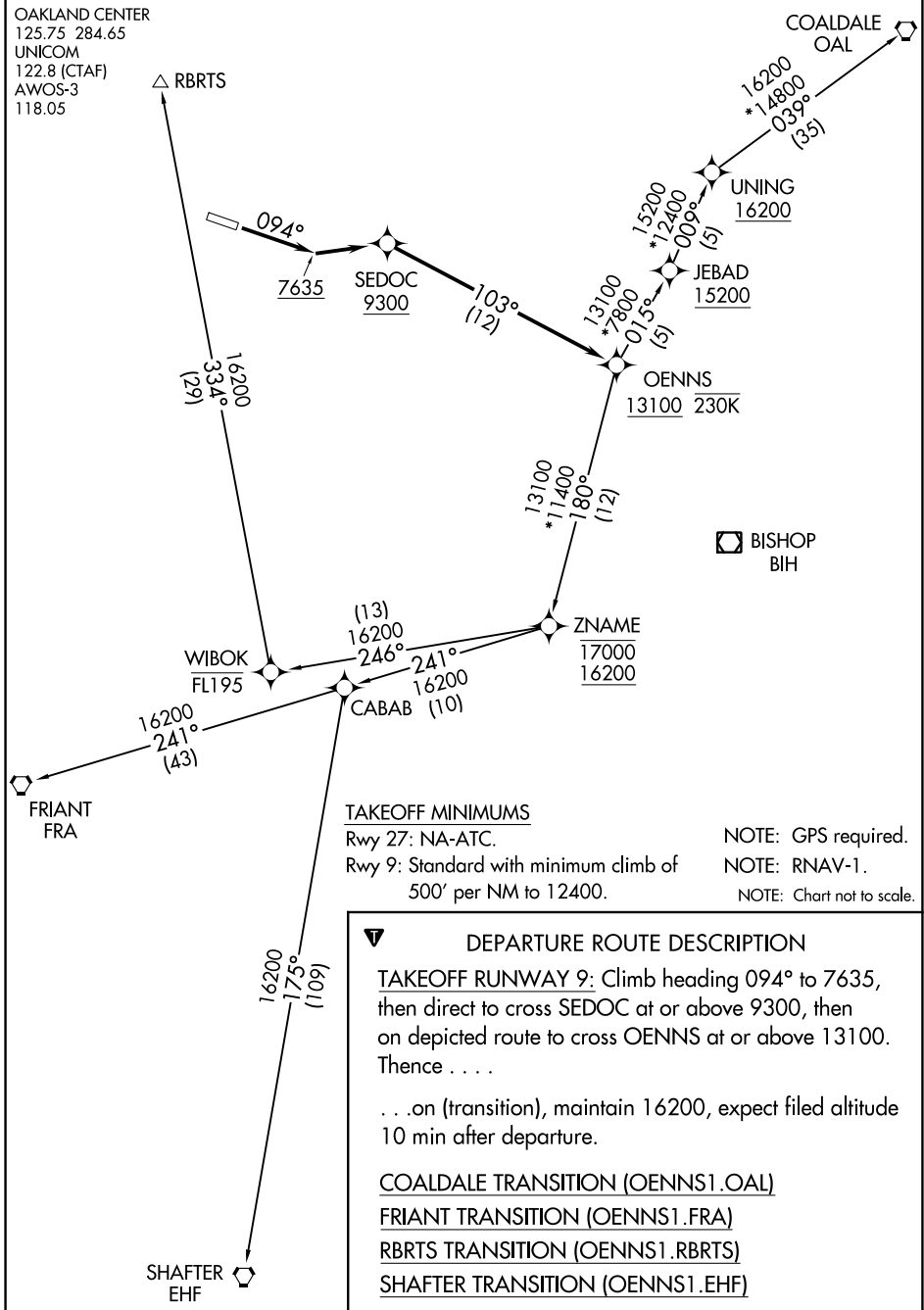


OENNS ONE DEPARTURE (RNAV)

AL-6841 (FAA)

MAMMOTH YOSEMITE (MMH)
MAMMOTH LAKES, CALIFORNIA

OAKLAND CENTER
125.75 284.65
UNICOM
122.8 (CTAF)
AWOS-3
118.05



SW-2, 26 DEC 2024 to 23 JAN 2025

SW-2, 26 DEC 2024 to 23 JAN 2025

TAKEOFF MINIMUMS

Rwy 27: NA-ATC.

Rwy 9: Standard with minimum climb of
500' per NM to 12400.

NOTE: GPS required.

NOTE: RNAV-1.

NOTE: Chart not to scale.



DEPARTURE ROUTE DESCRIPTION

TAKEOFF RUNWAY 9: Climb heading 094° to 7635, then direct to cross SEDOC at or above 9300, then on depicted route to cross OENNS at or above 13100. Thence

. . . on (transition), maintain 16200, expect filed altitude 10 min after departure.

COALDALE TRANSITION (OENNS1.OAL)

FRIANT TRANSITION (OENNS1.FRA)

RBRTS TRANSITION (OENNS1.RBRTS)

SHAFTER TRANSITION (OENNS1.EHF)

OENNS ONE DEPARTURE (RNAV)