

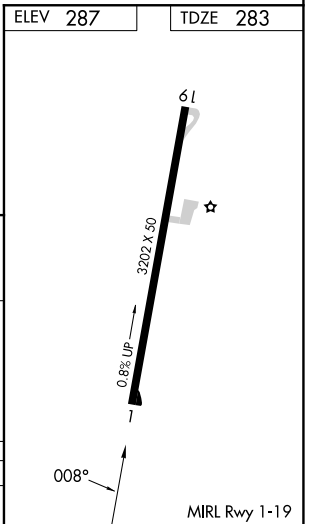
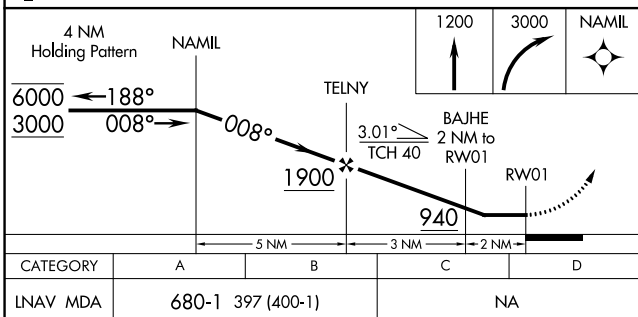
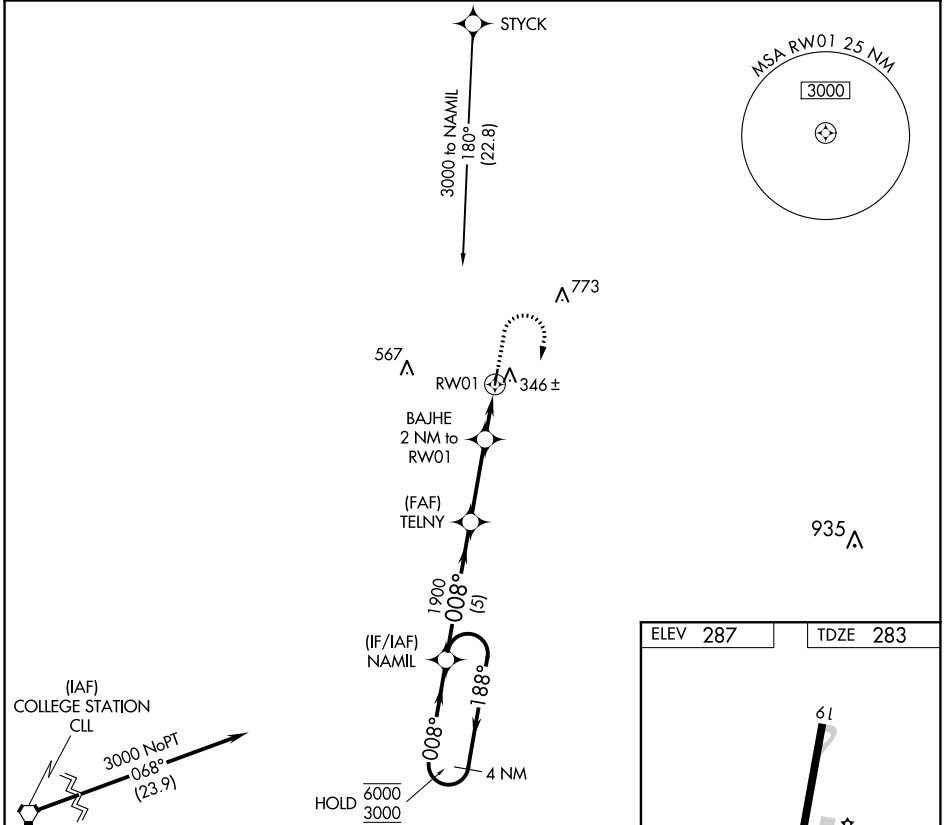
APP CRS	Rwy Idg	<b>3202</b>
<b>008°</b>	TDZE	<b>283</b>
	Apt Elev	<b>287</b>

# RNAV (GPS) RWY 1

MADISONVILLE MUNI (51R)

RNP APCH - GPS.	MISSED APPROACH: Climb to 1200 then climbing right turn to 3000 direct NAMIL and hold.
<p>▼ Procedure NA at night.</p> <p>▲ NA Rwy 1 helicopter visibility reduction below 1 SM NA. Use UTS altimeter setting.</p>	

UTS ASOS <b>119.425</b>	HOUSTON CENTER <b>134.8 269.6</b>	CTAF <b>122.9</b>
----------------------------	--------------------------------------	----------------------



SC-5, 26 DEC 2024 to 23 JAN 2025

SC-5, 26 DEC 2024 to 23 JAN 2025