

APP CRS	Rwy Idg	3202
188°	TDZE	287
	Apt Elev	287

RNAV (GPS) RWY 19

MADISONVILLE MUNI (51R)

RNP APCH - GPS.

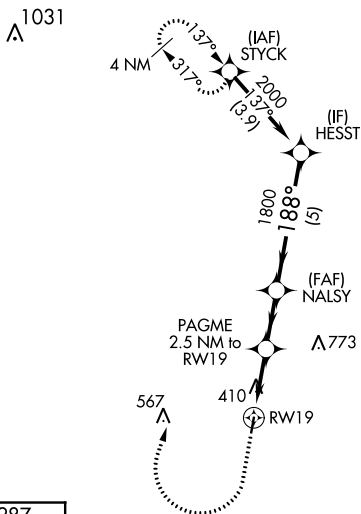
Procedure NA at night. Rwy 19 helicopter visibility reduction below 1 SM NA. Use UTS altimeter setting.

MISSED APPROACH: Climb to 1500 then climbing right turn to 2100 direct STYCK and hold.

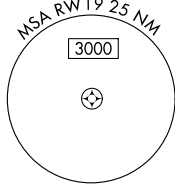
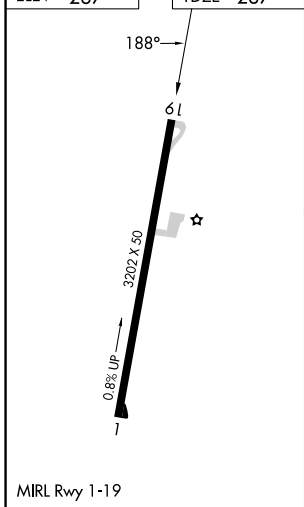
UTS ASOS	HOUSTON CENTER	CTAF
119.425	134.8 269.6	122.9

HOUSTON CENTER		CTAF
134.8 269.6		122.9

CTAF
122.9



ELEV	287	TDZE	287
------	-----	------	-----



1500	2100	STYCK	HESST	
↑	↷	✦		
RW19		PAGME 2.5 NM to RW19	NALSY	2000
		≤ 3.00° TCH 40	188°	
		1120	1800	
2.5 NM		2.1 NM	5 NM	
CATEGORY	A	B	C	D
LNAV MDA	720-1	433 (500-1)	NA	

SC-5, 26 DEC 2024 to 23 JAN 2025

SC-5, 26 DEC 2024 to 23 JAN 2025