

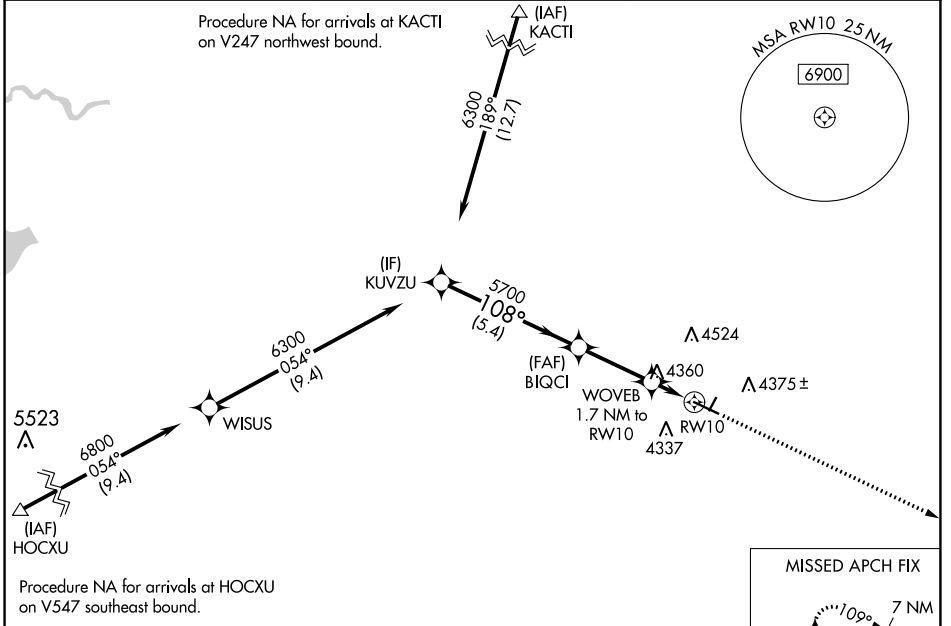
WAAS CH 61344 W10A	APP CRS 108°	Rwy Idg 5703 TDZE 4207 Apt Elev 4207
--	------------------------	---

RNAV (GPS) RWY 10

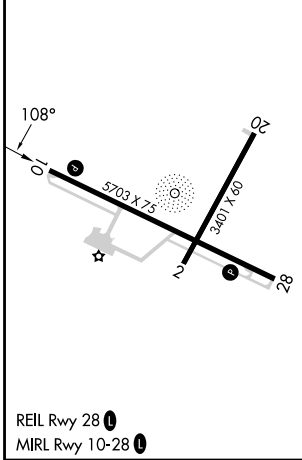
TORRINGTON MUNI (TOR)

RNP APCH - GPS.	MISSED APPROACH: Climb to 6200 direct CIKSI and hold.
<p>▼ For uncompensated Baro-VNAV systems, LNAV/VNAV NA below -26°C or above 54°C.</p>	

ASOS 118.375	DENVER CENTER 127.95 338.2	UNICOM 122.8 (CTAF) 0
------------------------	--------------------------------------	---------------------------------



ELEV 4207	TDZE 4207
------------------	------------------



<p>KUVZU 6300</p> <p>BIQCI 5700</p> <p>WOVEB 1.7 NM to RW10</p> <p>CIKSI 6200</p> <p>GP 3.00° TCH 40</p> <p>5.4 NM 2.9 NM 1.7 NM</p>	<p>6200 CIKSI</p>			
	<p>RW10</p>			
CATEGORY	A	B	C	D
LPV DA		4457-1	250 (300-1)	
LNAV/VNAV DA		4468-1	261 (300-1)	
LNAV MDA	4660-1	453 (500-1)	4660-1 3/8	453 (500-1 3/8)
CIRCLING	4740-1	533 (600-1)	4880-2 673 (700-2)	4960-2 1/2 753 (800-2 1/2)

NW-1, 26 DEC 2024 to 23 JAN 2025

NW-1, 26 DEC 2024 to 23 JAN 2025