


LOC I-LCK <b>110.1</b>	APP CRS <b>232°</b>	Rwy Idg 23L 23R TDZE <b>740 743</b> Apt Elev <b>744 744</b>
---------------------------	------------------------	--

# ILS or LOC RWY 23L

RICKENBACKER INTL (LCK)

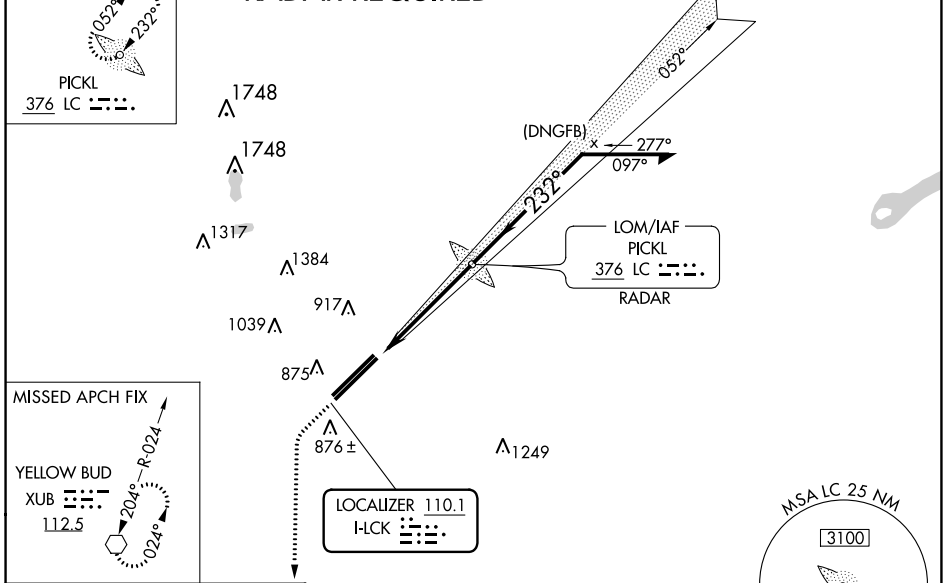
**⚠** Circling NA northwest of Rwy 5L-23R. When local altimeter setting not received, use John Glenn Columbus Intl altimeter setting: increase DA to 975 feet; increase all MDAs 40 feet and S-LOC 23L visibility Cats C/D to RVR 5500 and Circling visibility Cat D to 2 1/4 SM. Autopilot coupled approach NA below 1000 MSL.

**MALSR**  
 MISSED APPROACH: Climb to 3000, then left turn direct XUB VOR and hold.

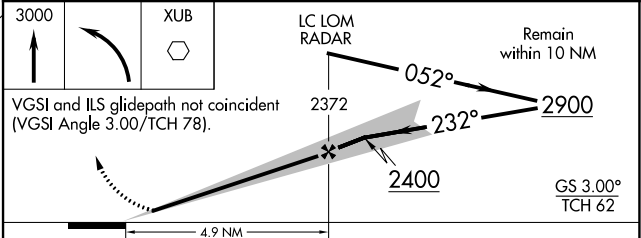
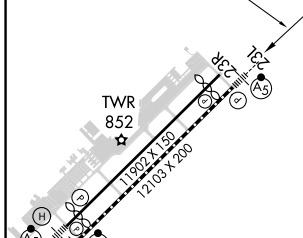
ATIS <b>132.75</b>	COLUMBUS APP CON <b>134.0 279.6</b>	RICK TOWER <b>120.05 348.4</b>	GND CON <b>125.275 275.8</b>	CLNC DEL <b>125.275 275.8</b>
-----------------------	--	-----------------------------------	---------------------------------	----------------------------------

ALTERNATE MISSED APCH FIX  
  
PICKL  
376 LC 

## RADAR REQUIRED



ELEV 744	TDZE 23L 740	TDZE 23R 743
----------	--------------	--------------



TDZ/CL Rwy 5R	REIL Rwy 23R	HIRL Rwy 5L-23R and 5R-23L	FAF to MAP 4.9 NM		
Knots	60	90	120	150	180
Min:Sec	4:54	3:16	2:27	1:58	1:38
CATEGORY	A	B	C	D	
S-ILS 23L	940/24		200 (200-1/2)		
S-LOC 23L	1 220/24 480 (500-1/2)		1 220/50 480 (500-1)		
SIDESTEP RWY 23R	1 220-1 477 (500-1)		1 220-1 477 (500-1)		1 220-2 477 (500-2)
CIRCLING	1 240-1 496 (500-1)		1 280-1 536 (600-1 1/2)		1 400-2 656 (700-2)