

WAAS CH 78410	APP CRS 052°	Rwy Idg 12103
W05A		TDZE 736
		Apt Elev 744

RNAV (GPS) RWY 5R

RICKENBACKER INTL (LCK)

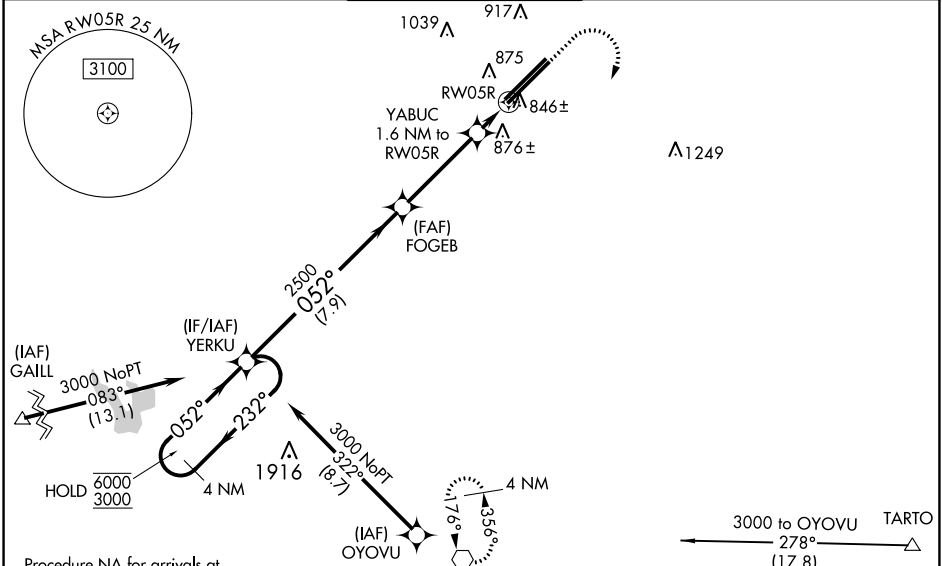
RNP APCH - GPS

▲ Circling NA northwest of Rwy 5L-23R. For uncompensated Baro-VNAV systems, LNAV/VNAV NA below -16°C or above 54°C. Baro-VNAV and VDP NA when using John Glenn Columbus Intl altimeter setting. When local altimeter setting not received, use John Glenn Columbus Intl altimeter setting: increase LPV DA to 971 feet; increase LNAV/VNAV DA to 1138 feet and visibility to RVR 4000 all Cats; increase all MDAs 40 feet and LNAV Cats C/D visibility to RVR 4000 and Circling Cat D visibility to 2 1/4 SM. For inop ALS when using John Glenn Columbus Intl altimeter setting, increase LNAV/VNAV visibility to RVR 6000, all Cats.

ALSF-2

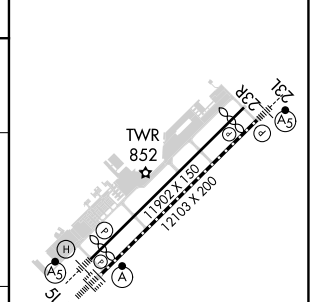
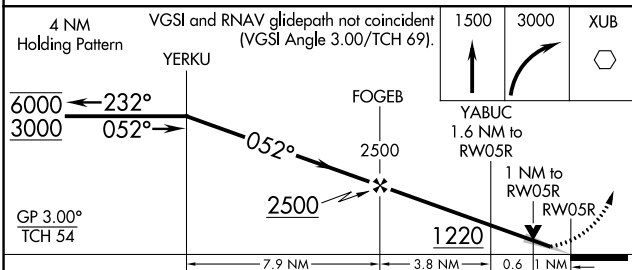
MISSED APPROACH: Climb to 1500 then climbing right turn to 3000 direct XUB VOR and hold.

ATIS 132.75	COLUMBUS APP CON 134.0 279.6	RICK TOWER 120.05 348.4	GND CON 125.275 275.8	CLNC DEL 125.275 275.8
-----------------------	--	-----------------------------------	---------------------------------	----------------------------------



Procedure NA for arrivals at GAILL on V19 southwest bound.

ELEV	744	TDZE	736
------	-----	------	-----



CATEGORY	A	B	C	D
LPV DA		936/18	200 (200-1/2)	
LNAV/VNAV DA		1103/35	367 (400-5/8)	
LNAV MDA	1120/24	384 (400-1/2)	1120/35	384 (400-5/8)
CIRCLING	1240-1	496 (500-1)	1280-1 1/2 536 (600-1 1/2)	1400-2 656 (700-2)

TDZ/CL Rwy 5R
REIL Rwy 23R
HIRL Rwys 5L-23R and 5R-23L

EC-2, 26 DEC 2024 to 23 JAN 2025

EC-2, 26 DEC 2024 to 23 JAN 2025