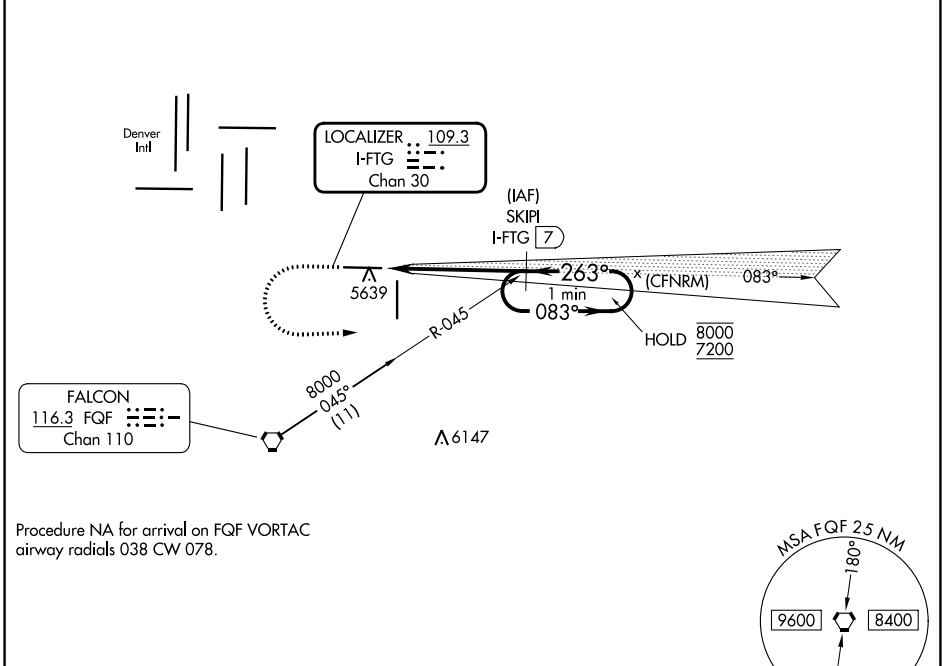


LOC/DME I-FTG 109.3 Chan 30	APP CRS 263°	Rwy Idg TDZE Apt Elev	8002 5489 5515
-------------------------------------------------	------------------------	-----------------------------	-------------------------------------------

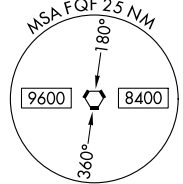
ILS or LOC RWY 26

COLORADO AIR AND SPACE PORT (CFO)

DME required.		MALSR	MISSED APPROACH: Climb to 6100 then climbing left turn to 7200 on heading 080° and on FQG VORTAC R-045 to SKIPI/I-FTG 7 DME and hold.						
▼ For inop ALS, increase S-LOC 26 Cat C/D visibility to 1 1/8 SM. Autopilot coupled approach NA below 6250 MSL. ▲			ATIS 119.025	DENVER APP CON 128.25 371.95	SPACE PORT TOWER * 120.2 (CTAF)	GND CON 124.7	CLNC DEL 124.7	CLNC DEL 121.75 (When twr closed)	UNICOM 122.95



Procedure NA for arrival on FQG VORTAC airway radials 038 CW 078.



ELEV 5515	TDZE 5489	△ 6529				
6100 ↑ 7200 hdg 080° FQG R-045 SKIPI I-FTG 7		SKIPI I-FTG 7 7200		One Minute Holding Pattern 083° → 8000 ← 263° 7200		
*LOC only I-FTG 1.7 *I-FTG 2.9 7200		GS 3.00° TCH 50				
1.1 NM 4.1 NM						
CATEGORY	A	B	C	D		
S-ILS 26	5689-1/2 200 (200-1/2)					
S-LOC 26	5900-1/2 411 (400-1/2)		5900-3/4 411 (400-3/4)			
CIRCLING	6000-1 485 (500-1)		6100-1 1/2 585 (600-1 1/2)		6300-2 1/2 785 (800-2 1/2)	

- REIL Rwy 8 and 17
- HIRL Rwy 8-26
- MIRL Rwy 17-35

SW-1, 26 DEC 2024 to 23 JAN 2025

SW-1, 26 DEC 2024 to 23 JAN 2025