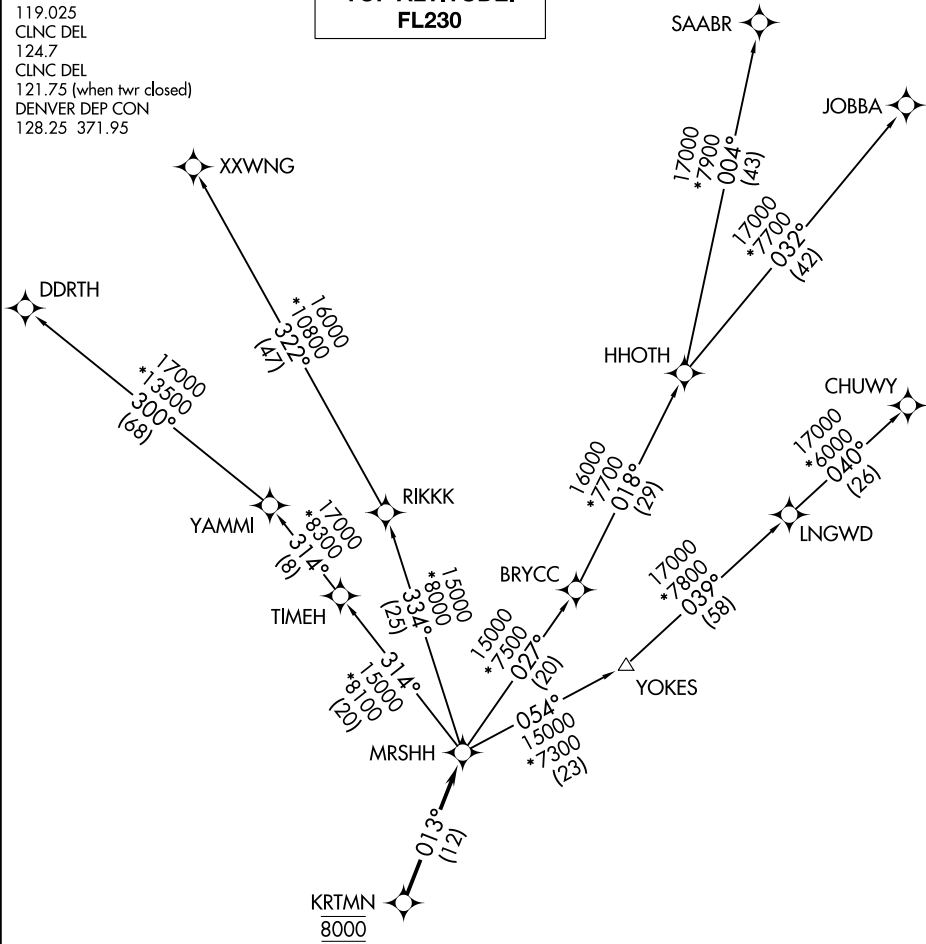


# MRS HH TWO DEPARTURE (RNAV)

**TOP ALTITUDE:  
FL230**

ATIS  
119.025  
CLNC DEL  
124.7  
CLNC DEL  
121.75 (when twr closed)  
DENVER DEP CON  
128.25 371.95



SW-1, 26 DEC 2024 to 23 JAN 2025

SW-1, 26 DEC 2024 to 23 JAN 2025

### TAKEOFF MINIMUMS

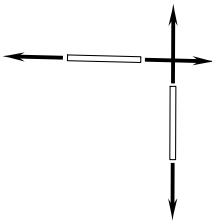
Rwys 8, 17, 26, 35: Standard.

NOTE: DME/DME/IRU or GPS required.

NOTE: RNAV 1.

NOTE: Turbojets only.

NOTE: RADAR required.



NOTE: Chart not to scale.

(NARRATIVE ON FOLLOWING PAGE)

# MRS HH TWO DEPARTURE (RNAV)



DEPARTURE ROUTE DESCRIPTION

TAKEOFF RUNWAY 8: Climb on a heading between 312° CW 228° as assigned by ATC. Thence. . . .

TAKEOFF RUNWAY 17: Climb on a heading between 352° CW 229° as assigned by ATC. Thence. . . .

TAKEOFF RUNWAY 26: Climb on a heading between 315° CW 083° as assigned by ATC. Thence. . . .

TAKEOFF RUNWAY 35: Climb on a heading between 313° CW 172° as assigned by ATC. Thence. . . .

. . . . expect RADAR vectors to cross KRTMN at 8000 then on track 013° to MRSHH, then on (transition) maintain FL230 or filed lower altitude. Expect higher filed altitude ten minutes after departure.

CHUWY TRANSITION (MRS HH2.CHUWY)

DDRTH TRANSITION (MRS HH2.DDRTH)

JOBBA TRANSITION (MRS HH2.JOBBA)

SAABR TRANSITION (MRS HH2.SAABR)

XXWNG TRANSITION (MRS HH2.XXWNG)

SW-1, 26 DEC 2024 to 23 JAN 2025

SW-1, 26 DEC 2024 to 23 JAN 2025